



# Directory of Assistance for LGUs and Constituents



## REGIONAL DEVELOPMENT COUNCIL REGION IV-A (CALABARZON)

NEDA Region IV-A, Barangay Milagrosa, Calamba City, Laguna 4027  
Direct Line: (049) 502-0289 / 502-0229 | Mobile: 0917-805-5848  
E-mail: [rdc.calabarzon@gmail.com](mailto:rdc.calabarzon@gmail.com) | Website: <http://rdccalabarzon.gov.ph>

**CAvite**  
**LAguna**  
**BAtangas**  
**Rizal**  
**QueZON**







## FOREWORD

The Regional Development Council (RDC) IV-A through its Investment Promotions Group (IPG) recognizes that the implementation of local programs and projects is usually hampered by limited technical capacity and funding on the part of the LGUs.

The IPG had identified the need to develop the **Directory of Assistance to LGUs and Constituents** in CALABARZON Region. It is a compendium/compilation of information on the services provided by local and international government and non-government organizations in the areas of technical and financing assistance for LGUs and its constituents. The Directory contains the names of the organizations, loan packages, collateral requirements, loan processing procedures, and contact persons, among others.

The Directory will guide the LGUs and its constituents to access technical, financial and management assistance services to facilitate program and project financing and implementation towards the realization of the regional development goals.



# DEVELOPMENT ADMINISTRATION SECTOR

## National Intelligence Coordinating Agency

• Security Education Program	40
• Security Situation Report	41
• Security Survey and Inspection	42
• Orientation on the Communist-Terrorist Group (CTG) Problem	43

## Philippine Statistics Authority

• Statistical Survey Review and Clearance System (SSRCS)	46
• Batch Request Entry Query System (BREQS)	47
• Inventory of Statistical Standards in the Philippines (ISSiP)	48

# INFRASTRUCTURE SECTOR

## Department of Energy

• Auto LPG Program	51
• Establishment of Energy Efficient and Conservation Office (EECO) in each LGU	52
• Development of Local Energy Efficiency and Conservation Act (LEECAP)	53
• Designation of Energy Efficiency and Conservation Officer (EECO Officer) to be the head of EECO as designated from the existing personnel of the LGU	54
• Designation of Certified Energy Conservation Officer (CECO) for Type 1 designated establishments and Certified Energy Manager (CEM) for Type 2 designated establishments	55
• Enforce LGU to ensure compliance with the prescribed ratings standard for energy performance in buildings	55
• Support LGU by recommending DOE's accredited Energy Service Company (ESCO) services to a multi-technology service and goods towards developing and designing energy efficiency projects, delivering and guaranteeing energy savings, and ensuring cost-effective and optimal performance at no cost to LGU (investment) based on the performance contract	56
• Development of Policy Ordinance on the implementation of EE & C as a requirement to the issuance of Building and Business Permit	56
• Implementation of the following guidelines in the LGU on EE & C technologies; (a) Energy Conserving Design of Building and Utility Systems, (b) Roadway Lighting Guidelines	57
• The Asia EDGE - Enhancing Development and Growth through Energy Initiative Supported by the USAID	58
• Access to Sustainable Energy Programme (ASEP) -GOP Counterpart	60
• Development for Renewable Energy Applications Mainstreaming Market Sustainability (DREAMS)	61

# Table of Contents

## ECONOMIC SECTOR

## Banko Sentral ng Pilipinas (BSP)

• BSP Lucena's Public Information Campaign (PIC) and Financial Learning Program (FLP)	1
---	---

## Department of Agriculture/World Bank

• Philippine Rural Development Project (PRDP)	3
---	---

## Department of Information and Communications Technology

• Electronic Business Permit and Licensing System (E-BPLS)	6
• Digital Jobs PH	7

## Department of Trade and Industry

• Negosyo Center (NC)	10
• Barangay Micro Business Enterprise (BMBE)	11
• Shared Service Facility (SSF)	12
• Market Development	14
• Kapatid Mentor Me Program	15
• SME Roving Academy	16
• Industry Cluster Enhancement Program	17
• OTOP Next Gen	18
• Go Lokal!	19
• Pondo para sa Pagbabago (P3)	20
• Consumer Advocacy	22
• Accreditation of Service and Repair Enterprises	23
• Issuance of Sales Promo Permit	24
• Consumer Complaints Resolution	25
• Monitoring and Enforcement of Fair Trade Laws	26
• Supply and Price Monitoring	27
• Product Certification Scheme	28
• Accreditation of Truck Rebuilding Centers	29
• Private Emission Testing Center Accreditation	30

## Department of Tourism

• Tourism Industry Skills Program (TISP)	33
• Accreditation of Tourism Enterprises	34
• Orientation on Tourism Accreditation for LGUs	35
• Basic Tourism Statistics Training (BTST)	36

## Landbank of the Philippines

• Financing LGU Projects	38
--------------------------	----



# MULTI-SECTOR

<b>Department of Information and Communications Technology</b>	
• Tech4ED Project	102
<b>Asian Development Bank</b>	
• Japan Fund for Poverty Reduction (JFPR)	104
<b>Department of Foreign Affairs</b>	
• Perez-Guerrero Trust Fund for Economic and Technical Cooperation Among Developing Countries	106
<b>Government of Japan</b>	
• Grant Assistance for Grassroots Human Security Project General Grant Program (GGP)	109
<b>Municipal Development Fund Office</b>	
• LGU Loan Financing TA under the Municipal Development Fund Office (MDFO)	112
<b>Public-Private Partnership Center</b>	
• Provision of Technical Assistance for Project Development	121
• Project Development and Monitoring Facility (PDMF)	123
• Provision of Capacity Building Workshops for LGUs	125
• Assistance in Policy Formulation for LGUs	127
<b>National Economic and Development Authority</b>	
• Training on Presentation Skills	131
• Training on Technical Secretariat Services	132
• Advocacy on Ambisyon Natin 2040, Regional Development Plan, Regional Development Research Agenda, and CALABARZON Information and Communications Technology Plan	133
• Training on CALABARZON Regional Project Monitoring and Evaluation System (RPMES)	134
• Project Development Training	135
• Training on the Formulation of the Provincial / Local Development Investment Programs (PDIP/LDIP)	136
• Technical Assistance on Mainstreaming Gender and Development, and Migration and Development	137
• Technical Assistance on Local Development Planning	138
<b>Department of Tourism</b>	
<b>Department of Public Works and Highway (DOT/DPWH)</b>	
• Tourism Road Infrastructure Program (TRIP)	141

<b>Department of Information and Communications Technology</b>	
• National Broadband Plan Program	64
• Free Wi-Fi for All (Free Wi-Fi in Public Places Project)	65
<b>Department of Tourism</b>	
• Tourism Infrastructure Through D.R.E.A.M.S. Thrust (TIEZA)	67
<b>National Irrigation Administration</b>	
• Request for Irrigations Systems (New Areas & Extension)	69
• Request for Minor Rehabilitation / Restoration of existing Irrigation Systems	69
• Technical Assistance on Communal Irrigation Development to LGU and Other Parties	70
<b>National Telecommunications Commission</b>	
• NTC Fixed and Mobile Benchmarking System	73
• Acquisition of Rapidly Deployable Communication System	74
• Acquisition of Multiband Network Scanning Receiver and Post Processing Tools	75

# SOCIAL SECTOR

<b>Department of Labor and Employment:</b>	
• Provision of Livelihood Project Funding Assistance	78
• Special Program for Employment of Students	79
<b>Department of Social Welfare and Development</b>	
• Pantawid Pamilyang Pilipino Program (4PS)	82
• Kapit-Bisig Laban sa Kahirapan-Comprehensive and Integrated (KALAHI-CIDSS)	83
• Sustainable Livelihood Program (SLP)	84
• Social Pension Program for Indigent Senior Citizens	85
• Cash Grant for Centenarians	86
• Supplementary Feeding Program (SFP)	87
• Recovery and Reintegration Program for Trafficked Persons (RRPTP)	88
• Assistance to Individuals in Crisis Situations (AICS)	89
• Comprehensive Program for Street Children, Street Families, and Indigenous People (IPs), especially Badjaos and SHIELD Against Child Labor	90
• Disaster Response Assistance and Management	91
• Operation of Four Centers	92
• Unconditional Cash Transfer (UCT)	93
• Minors Traveling Abroad (MTA)	94
<b>National Commission for Culture and the Arts</b>	
• Grants Program for the Development, Protection, Preservation and Dissemination of Philippine Culture and The Arts	97
• Technical Assistance Program	98
• Cultural Mapping Project	99
• Outreach Program	100













# ELECTRONIC BUSINESS PERMITS AND LICENSING SYSTEM

## OBJECTIVES/MAIN AREAS OF ASSISTANCE

A cloud-based eBPLS (Electronic Business Permits and Licensing System) software for LGUs.

Provision of an automated Business Permits and Licensing System to LGUs.

### Services:

- Free online technical assistance to LGUs comply with the Ease of Doing Business Law & Efficient Government Service Delivery
- Online application for new and renewal of business permits
- Automates the processing of business permit application, assessment and collection of fees, the release of business permits, and report generation

### Target Areas:

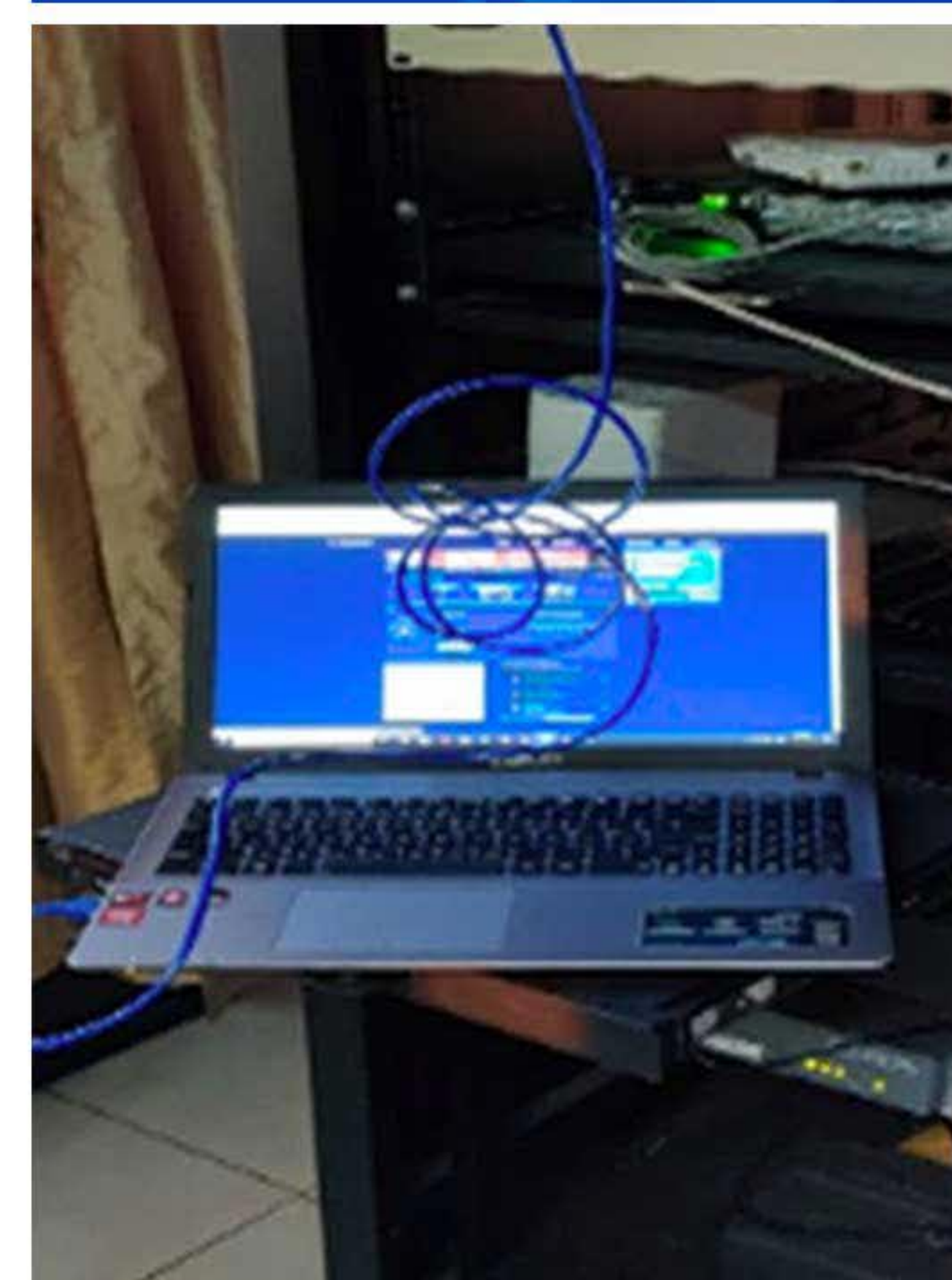
Local Business Economy and Environment  
LGU Efficiency  
LGU Earnings  
eGovernance

### Development Partners:

DICT, DTI, DILG/GAA



DICT



ECONOMIC SECTOR

DEPARTMENT OF  
INFORMATION AND  
COMMUNICATIONS  
TECHNOLOGY





# DIGITAL JOBS PH TRAINING

## OBJECTIVES/MAIN AREAS OF ASSISTANCE



### Department of Information and Communications Technology

3rd Floor, Narita Building, Gardenville Subdivision,  
MacArthur Highway Brgy. Pio Cruzcosa, Calumpit Bulacan  
Tel No.: (044) 792 5847  
Email: rey.sy@dict.gov.ph

DigitaljobsPH Program is intended to create meaningful ICT-enabled jobs in socio-economically disadvantaged areas in the country. It specifically focuses on areas where there is high population but low employment due to lack of investors. It also aims to promote ICT-enabled jobs as a high-value economic activity in rural communities that are not yet ready to host Information Technology-Business Process Management (IT-BPM) operations.

The main objective of the project is to provide technical training to increase the capabilities of the people, who are currently unemployed or financially unstable, to land ICT-related jobs.

### Specifically:

- Increase the ICT technical skills of the talents in the countryside
- Increase hireability of the people to land a job in the field of ICT
- Promote local talent and local businesses
- Enhance the ICT technical skills of in-house participants (DICT Regional Offices personnel and Tech4ED Center Manager) as potential trainers
- Help provide economic opportunities not only for the graduates but also for the people who will, directly and indirectly, benefit from this initiative

**Target Areas:** Rural Areas Outside Metro Manila

**Development Partner:** DICT, LGUs/ GAA



# NEGOSYO CENTER (NC)

## OBJECTIVES/MAIN AREAS OF ASSISTANCE

Strengthen micro, small, and medium enterprises (MSMEs) and create more job opportunities in the country.

One stop shop for services that cater to the needs of entrepreneur's in processing requirements necessary to establish a business and in accessing information essential for entrepreneur's growth.

### Target Areas:

New and existing Small, and Medium Enterprises (MSMEs)

### Development Partners:

DTI Regional and Provincial Offices



ECONOMIC SECTOR

# DEPARTMENT OF TRADE AND INDUSTRY (DTI)





# SHARED SERVICE FACILITY (SSF)

## OBJECTIVES/MAIN AREAS OF ASSISTANCE

### Improve the competitiveness of MSMEs

#### Services:

**Provision of productivity-enhancing machinery, tools, systems, accessories and other auxiliary items, skills and knowledge under a shared system.**

#### Requirements:

##### *Cooperators*

1. Registered with the Securities and Exchange Commission or the Cooperative Development Authority or any other appropriate agency which registers organizations for purposes of legal personality.
2. For a facility costing up to PhP1.0 million, Cooperator must be in existence for at least three (3) years.
3. For a facility costing more than PhP1.0 million, the Cooperator must be in existence for at least five (5) years.
4. Capable of providing counterpart support in terms of:
  - Suitable facilities to house the machinery and equipment
  - Support personnel
  - Working capital

##### *Shared Service Facility*

1. Address processing and manufacturing gaps or bottlenecks:
  - Absence of the needed facility
  - Lack of capacity of an existing facility
  - Cost of services of an existing facility is not affordable

# BARANGAY MICRO BUSINESS ENTERPRISE (BMBE)

## OBJECTIVES/MAIN AREAS OF ASSISTANCE

#### BMBEs Act of 2002 aims:

- Informal businesses entry to the mainstream economy
- Incentives and benefits for eligible BMBEs

#### Services:

- Processing of BMBE Certificate of Authority
- Incentives:
  - Income Tax Exemption
  - Minimum Wage Exemption
  - Special Credit Window
  - Business Development Service

#### Requirements:

- Total assets not more than PHP 3 million (exclusive of land)
- BMBE Application Form
- Certificate of Registration (DTI, SEC, or CDA)

#### Procedure:

- Accomplish and submit BMBE Form to Negosyo Center/DTI Office
- DTI evaluates eligibility of application DTI issues Certificate of Authority

#### Target Areas:

New and existing Small, and Medium Enterprises (SMEs)

#### Development Partners:

- DTI-NegosyoCenter - BMBE Certificate of Authority
- BIR - Income Tax Exemption
- DOLE - Minimum Wage Exemption
- LBP, DBP, Small Business Corporation (SBC), GSIS, SSS, Quedancor-Special Credit Window
- DTI, DOST, UP-Institute for small scale industries, CDA, TESDA Business Development Service



# MARKET DEVELOPMENT

## OBJECTIVES/MAIN AREAS OF ASSISTANCE

**Assist in the transfer, exchange and movement of goods between producers and consumers.**

### Services:

- Assistance to SMEs:
  - assess the clients' options and market potential
  - conduct research and evaluate competition
  - develop commercial structures by identifying new agents and distributors
  - initiate joint ventures and project partnerships
- Assistance to SMEs in their participation at both local and international trade fairs/event, i.e. Kalakal (Regional), SikatPinoy (Domestic), Manila Fame (International)
- Organized local and international trade fairs/events for SME participation

### Target Areas:

Encourage DTI Region 4A assisted Micro, Small, and Medium Enterprises (MSMEs) to participate in the following trade fair/show/ exhibition:

- Kalakal (Regional)
- SikatPinoy (Domestic)
- Manila Fame (International)

### Development Partners:

- DTI Regional and Provincial Offices
- Bureau of Domestic Trade (DBT)
- Center for International Trade Exhibitions and Missions (CITEM)

2. Increase the productivity of the industry cluster in terms of any of the following:
  - Product improvement/quality enhancement
  - Marketability/price competitiveness
  - Conformity to standards
3. Support MSMEs belonging to an identified industry cluster has an “ELIGIBLE COOPERATOR”
4. Improve the products of the One-Town One-Product (OTOP) project

### Target Areas:

#### *Cooperators*

- Non-government Organizations, People.s Organizations, Cooperatives, Industry / Trade / Business Associations, Local Government Units (LGUs), State Universities / Colleges, Technical Vocational Schools and other similar government and Training institutions

#### *Beneficiaries*

- Actual and potential users of the SSF which should be predominantly cooperatives, associations or groups of MSMEs including MSMEs or individual entrepreneurs who may not be members of cooperatives, associations, corporations or organizations

### Development Partners:

DTI Regional and Provincial Office



# SME ROVING ACADEMY

## OBJECTIVES/MAIN AREAS OF ASSISTANCE

**Develop micro, small and medium enterprises to become competitive in the domestic and global markets.**

**Service:**

Management training program for owners and managers for small enterprises

**How to apply for training**

1. Participants register with DTI Provincial Office - SME Center
2. SME Counsellor (with assistance from an expert) diagnoses the needs of the participants
3. SME Counsellor (with assistance from an expert) provides the entrepreneur /would be entrepreneur general advice on the training that he/she may need
4. SME Counsellor, in coordination with the Network Partners, informs the entrepreneur/would be entrepreneur when and where he/she may be assisted
5. SME Counsellor tracks adaptation by the entrepreneur of the business development services provided
6. SME Counsellor will determine if the entrepreneur needs additional services within the current stage or maybe endorsed to the next stage

**Target Areas:**

Micro, Small, and Medium Enterprises (MSMEs)

**Development Partners:**

DTI Regional and Provincial Offices

# KAPATID MENTOR ME PROGRAM

## OBJECTIVES/MAIN AREAS OF ASSISTANCE

**Strengthen the mentorship program for micro and small entrepreneurs and link them to the value chain of medium and large corporations through inclusive business models.**

**Services:**

Scale up MSME businesses thru the weekly coaching and mentoring by business owners and practitioners on different functional areas of entrepreneurship

**Target Areas:**

Micro, Small, and Medium Enterprises (MSMEs)

**Development Partner:**

Negosyo Centers



# OTOP NEXT GEN

## OBJECTIVES/MAIN AREAS OF ASSISTANCE

Offer a package of public-private assistance in order for MSMEs with minimum viable products to come up with new or better offerings with significant improvement and innovation in the areas of quality, product development, design, standards compliance, marketability, production capability and brand development.

### Target Areas:

Micro, Small, and Medium Enterprises (MSMEs)

### Development Partners:

DTI Regional and Provincial Offices

# INDUSTRY CLUSTER ENHANCEMENT PROGRAM

## OBJECTIVES/MAIN AREAS OF ASSISTANCE

Enhance the industry's competitiveness to develop and expand exports, generate investments and create jobs:

- Industry focus
- Private sector active involvement
- Convergence

### Target Areas:

*Priority Industries include:*

- Coffee
- Cacao
- Processed Fruits and Nuts
- Bamboo
- Wearables and Homestyle
- Coco coir

### Development Partners:

DTI Regional and Provincial Offices



# PONDO PARA SA PAGBABAGO (P3)

## OBJECTIVES/MAIN AREAS OF ASSISTANCE

**Provide micro entrepreneurs an alternative source of financing that is easy to access and made available at a reasonable cost.**

**This program gives a boost to the development of the MSME sector, particularly the micro enterprises that comprise about 90 of registered enterprises in the country.**

### **Services:**

- P3 Wholesale Lending Program loan to micro enterprises with asset size not exceeding PHP 3.0 million at not more than 2.5% per month all in interest rate and service charges. This 2.5% monthly cap is an effective rate, based on diminishing balance of the principal portion of the loan
- 5-6 lending imposes an interest rate of at least 20% monthly and could go significantly higher given the weekly or daily collection schedule

# GO LOKAL!

## OBJECTIVES/MAIN AREAS OF ASSISTANCE

**Provide opportunities for startups, social entrepreneurs, cooperatives, online sellers, and youth/student entrepreneurs.**

### **Services:**

- Market access platform for market incubation and brand testing

### **Requirements:**

- Can supply unique and quality products with good design and packaging
- Little or no access to mainstream retail markets
- Highly innovative, adapting to evolving market preferences and aspires to compete with the best in the world
- Registered and have the necessary business permits, licenses, and certifications (e.g. FDA registration)

For details, check website: <https://golokal.dti.gov.ph/>

### **Procedure:**

Design Center of the Philippines (DCP) Product Specialists collaborate with MSMEs to develop one of a kind and modern designs, dynamic packaging, assured quality, value for money, and consistent supply of the products.

### **Target Areas:**

MSMEs

Visit Go Lokal! stores nationwide: @SM Kultura @Robinson's, Rustan's, CityMall, Duty Free Philippines, Shopwise, Ayala Mall, Kiss & Fly, and Enchanted Kingdom

### **Development Partners:**

- Design Center of the Philippines
- DTI Regional and Provincial Offices



# CONSUMER ADVOCACY

## OBJECTIVES/MAIN AREAS OF ASSISTANCE

**Ensures all business and consumer related-laws are effectively disseminated in order to regulate business and protect consumers Increase the level of awareness on consumerism.**

### **Services:**

Dissemination of business and consumer-related laws and programs, i.e., Trainings/Seminars/Fora/Conferences, Press Conferences & Briefings, Quad-Media (TV/Radio Program Guesting, Social Media, Print), Reproduction of Consumer Advocacy Materials.

### **Target Areas:**

Consumers, Business Establishments, Academe, and other Interested Parties

### **Development Partners:**

DTI Regional and Provincial Offices

### **Requirements:**

1. Application Form
2. Barangay/Municipal Business Permit
3. DTI Business Name Registration (for loans in excess of 50,000)
4. Photocopy ng Government-issued ID
5. ID picture

### **Procedure:**

For details on guidelines and procedure for loan application please visit:

- <https://www.dti.gov.ph/p3> or
- <https://www.sbgfc.org.ph/programs-and-services/p3-program>

### **Target Areas:**

Any self-employed or micro entrepreneur engaged in legitimate livelihood or business activity for at least one year

### **Development Partners:**

- DTI
- Micro Financing Institutions as the conduit



# ISSUANCE OF SALES PROMO PERMIT

## OBJECTIVES/MAIN AREAS OF ASSISTANCE

Ensures all Sales Promotion Permit Applications are processed evaluated correctly; collect the correct permit fee; and issue a Sales Promotion Permit in compliance with the applicable laws, rules and regulations within the prescribed turn-around time.

**Target Areas:** Business Establishments

**Development Partners:**

DTI Regional and Provincial Offices

# ACCREDITATION OF SERVICE AND REPAIR ENTERPRISES

## OBJECTIVES/MAIN AREAS OF ASSISTANCE

Ensures that accreditation requests of clients engage in the business of Service and Repair Enterprise is acted upon within the specified turn-around time and in accordance with the applicable laws, rules and regulations.

Service and Repair Enterprises- any business establishment, engaged in the repair, service or maintenance of motor vehicles; heavy equipment and engines and engineering works; electronics, electrical, air-conditioning and refrigeration; office equipment; medical and dental equipment and other consumer mechanical and industrial equipment, appliances or devices

**Target Areas:** Client - SRE Applicant

**Development Partner:** DTI Provincial Offices



# MONITORING AND ENFORCEMENT OF FAIR TRADE LAWS

## OBJECTIVES/MAIN AREAS OF ASSISTANCE

Ensures that all establishments comply with the requirements of Fair Trade Laws to protect consumers from trade malpractices and the unnecessary risk of injury from defective consumer products/services.

### Services:

- Monitoring and enforcement of suggested retail price and prevailing price of basic necessities and prime commodities (BNPC)

### Procedure:

- A letter of inquiry is issued to establishments selling basic necessities & prime commodities, requiring an explanation or justification as to why the prices of the above-stated goods are higher than what is indicated in the SRP

### Target Areas:

Manufacturers, importers, distributors, dealers, retailers, service/repair shops including emission testing centers and truck rebuilders

### Development Partners:

DTI Regional and Provincial Offices

# CONSUMER COMPLAINTS RESOLUTION

## OBJECTIVES/MAIN AREAS OF ASSISTANCE

Ensures that all consumer complaints received are resolved in accordance with applicable laws and procedures and to properly address identified risks and enhance opportunities.

### Services:

Adjudication and mediation of consumer complaints

### Target Areas:

Consumers with complaints within DTI jurisdiction

### Development Partners:

DTI Regional and Provincial Offices



# PRODUCT CERTIFICATION SCHEME

## OBJECTIVES/MAIN AREAS OF ASSISTANCE

**Ensures the buying consumers of the quality and safety of products produced locally and those imported from other countries.**

### Services:

- Issuance of Philippine Standard (PS) license to manufacturers on the use of the Philippine Standard (PS) Quality and Safety Marks for its capability to consistently manufacture products
- Issuance of Import Commodity Clearance (ICC) to importers of mandated product for certification whose shipments have been found confirming to the requirements of the relevant Philippine National Standards or acceptable international or foreign standards

### Procedure:

- BPS-qualified DTI IV-A Product Inspectors performs:
  - On-site verifications of imported products whether on vessel, or in declared warehouses
  - Inventory, product markings, documents validation, and product sampling

### Target Areas:

Buying Consumers , PS / ICC applicants and licensees

**Development Partners:** DTI Regional & Provincial Office

# SUPPLY AND PRICE MONITORING

## OBJECTIVES/MAIN AREAS OF ASSISTANCE

**Protects and safeguards the interests of consumers and the public, including the availability of supply of BNPCs at reasonable prices.**

**Ensures that 100% of the target firms for price trending are monitored for compliance to Price Act within the prescribed time.**

### Services:

- Determines the prevailing price and supply situation of BNPCs in major trading areas (regular monitoring)
- Validates prices of BNPCs vis-a-vis their respective suggested retail prices
- Creates database on the price and supply situation in a given area for reference/action

### Target Areas:

Market

### Development Partner:

DTI Provincial Offices



# PRIVATE EMISSION TESTING CENTER ACCREDITATION

## OBJECTIVES/MAIN AREAS OF ASSISTANCE

To maintain the quality of air and protect human life from the dangers of air pollution. It mandated the DTI to develop and implement standards and procedures on the licensing of qualified private service centers and their technicians.

Motor vehicles need to have their vehicles tested and certified for emissions compliance prior to vehicle registration renewal at the Land Transportation Office.

### Target Areas:

PETC Applicants / Consumers / Motor Vehicle Owners

### Development Partners:

Fair Trade Enforcement Bureau (FTEB)  
Consumer Protection Advocacy Bureau (CPAB)  
DTI Regional and Provincial Offices

# ACCREDITATION OF TRUCK REBUILDING CENTERS

## OBJECTIVES/MAIN AREAS OF ASSISTANCE

Assures the public that all rebuilt trucks are safe and roadworthy and meet the standards on exhaust emission.

Develops technical and management expertise in truck rebuilding to pave the way for rebuilding programs covering other types of vehicles.

### Services:

- Accreditation of all establishments, which conduct or provide rebuilding services for trucks before legally engaging in the business of truck rebuilding

### Requirements:

- Road Vehicle Requirements for Rebuilding (PNS 1951:2000);
- Road vehicles classification (PNS 1891:2000 - in particular, categories M3, N1, N2 and N3)
- Requirements for repositioning right hand drive to left hand drive on road vehicles (PNS 1259:1995)
- Road vehicles safety belts and restraint system specifications (PNS 1892:2000)

### Procedure:

- DTI validates if the rebuilder has the capacity to restore a whole truck unit to its design capacity and efficiency using directly imported or locally acquired used components/parts per Philippine National Standards (PNS) including the competencies of the personnel engaged in the rebuilding processes

**Target Areas:** Consumers, TRC applicants and licensees

**Development Partners:** DTI Regional & Provincial Office





QUEZON NATIONAL FOREST PARK  
IMPROVED BY  
1969 PRES FERDINAND E. MARCOS AND GOV. ANACLETO C. ALCALA



**DTI REGION IV-A**

3/F Marcelita Building, National Highway,  
Barangay Real Calamba City, 4027 Laguna  
Phone: (+63917) 115 9472, (+63917) 502 9978  
Email: r04a@dti.gov.ph

**DTI- BATANGAS**

NACIDA Building, Old City Hall Compound  
B. Morada Avenue, Lipa City 4217 Batangas  
Telefax: (+6343) 756.2330; 756.1336; 756.6477  
Email: r04a.batangas@dti.gov.ph

**DTI-CAVITE**

2F Government Center Building, Capitol Compound,  
Trece Martires City 4106 Cavite  
Phone: (+6346) 419.1028; Telefax: (+6346) 514.0461  
Email: r04a.cavite@dti.gov.ph

**DTI-LAGUNA**

Varimco Building., Km. 75, Barangay Banca-Banca  
Victoria 4011 Laguna  
Phone: (+6349) 559.0520 Telefax: (+6349) 559.0254  
Email: r04a.laguna@dti.gov.ph

**DTI-QUEZON**

2F Grand Central Terminal, Barangay Ibabang Dupay,  
Lucena City 4301 Quezon  
Telefax: (+6342) 795.0442  
Email: r04a.quezon@dti.gov.ph

**DTI-RIZAL**

2F Altica Arcade, 83 Circumferential Road,  
Barangay San Jose, 1870 Antipolo City  
Telefax: (+632) 8470.8824; 8630.6891  
Email: r04a.rizal@dti.gov.ph

ECONOMIC SECTOR

**DEPARTMENT OF  
TOURISM (DOT)**





# ACCREDITATION OF TOURISM ENTERPRISES

OBJECTIVES/MAIN AREAS OF ASSISTANCE

For tourism enterprises to maintain the quality standards in tourism, in accordance with the Tourism Act of 2009.

**Qualified to Apply for Accreditation:**

**1. Primary Tourism Enterprises-facilities and services that are directly related to tourism**

- Accommodations
- Travel and tour service
- Meetings, incentives, conventions and exhibitions
- Ecotourism
- Tourism frontliner

**2. Secondary Tourism Enterprises:**

- Health and wellness services
- Tourism related enterprises
- Tourism frontliner For details on requirements please visit:  
<http://accreditationonline.tourism.gov.ph/Downloadables/DR/TravelTourServices.pdf>

**Target Areas:** CALABARZON

**Development Partner:** DOT Region IV – A

# TOURISM INDUSTRY SKILLS PROGRAM (TISP)

OBJECTIVES/MAIN AREAS OF ASSISTANCE

Aims to conduct various human capability building trainings for the tourism industry stakeholders all over the country.

Aims to empower tourism industry workers to provide quality service leading to: customer satisfaction; meeting service standards for tourism; increase employment in the tourism sector; improve opportunities; increased competitiveness of the Philippines Tourism Industry; and increased tourist arrivals and receipts.

**Target Areas:** CALABARZON

**Development Partner:** DOT Region IV – A



# BASIC TOURISM STATISTICS TRAINING (BTST)

OBJECTIVES/MAIN AREAS OF ASSISTANCE

The statistics training is a technical assistance being extended by DOT to local government units and accommodation establishments all over the region. It teaches the participants a systematic way gathering and analyzing the numbers brought about by tourist arrivals and investments in the tourism industry.

BTST is vital to the tourism industry to monitor the economic impact that tourists arrivals make in the service industry of the city and the region as well. Data in tourist arrivals will help the city and other local government units in making decisions for future trends in development specially in infrastructure and human resource which can be reflected in their Comprehensive Land Use Plan (CLUP).

**Target Areas:** CALABARZON

**Development Partner:** DOT Region IV – A

# ORIENTATION ON TOURISM ACCREDITATION FOR LGUS

OBJECTIVES/MAIN AREAS OF ASSISTANCE

For tourism enterprises to maintain the quality standards in tourism, in accordance with the Tourism Act of 2009.

**For details please. visit:**

[https://www.academia.edu/32375728/Philippine\\_Tourism\\_Guidebook\\_for\\_Local\\_Government\\_Units](https://www.academia.edu/32375728/Philippine_Tourism_Guidebook_for_Local_Government_Units)

**Target Areas:** CALABARZON

**Development Partner:** DOT Region IV – A



**ECONOMIC SECTOR**

**LANDBANK OF THE PHILIPPINES**

# FINANCING LGU PROJECTS

**OBJECTIVES / MAIN AREAS OF ASSISTANCE**



**Financing to facilitate the implementation of various LGU projects.**

**Target Areas:**

- 1. Solid Waste Management Facilities and Equipment**
- 2. Construction of Public Market**
- 3. Computerization System Project**
- 4. Construction of the Municipal Building**

**Contact Details:**

Batangas Lending Center, Land Bank of the Philippines,

**Office Address** : 2F, Land Bank Building Pres. Laurel Highway, Marauoy, Lipa City

**Contact No. Branch** : Tel Nos. 043-7560909  
: Land Bank of the Philippines, Lipa City Branch

**Development Partner** : Land Bank of the Philippines, Lipa City Branch



**Department of Tourism**

G/F Dencris Business Building, National Highway,  
Barangay Halang, Calamba City, Laguna 4027  
Tel.No.: (049) 508 – 0741 (0747; 0748)  
Email: dot4a@tourism.gov.ph



# SECURITY EDUCATION PROGRAM

## OBJECTIVES/MAIN AREAS OF ASSISTANCE

Provide the recipient with the knowledge in the aspects of security (personnel, document, cyber, physical and personal).

### Services:

A half-day seminar on the different Aspects of Security. If a workshop is requested with the seminar, the whole activity covers one whole day

### Requirements:

- Letter request to NICA-4 for the conduct of the program with the preferred schedule
- A venue conducive to the audience
- Projector for the presentations
- A clear sound system
- Notebook and pen for the audience

**Target Areas:** Government Agencies

**Development Partner:** NICA



DEVELOPMENT  
ADMINISTRATION SECTOR

# NATIONAL INTELLIGENCE COORDINATING AGENCY





# SECURITY SURVEY AND INSPECTION

## OBJECTIVES/MAIN AREAS OF ASSISTANCE

**Examines and inspect Physical Security, Document and Information Security, Personnel Security and Communication Security applied or lacking in the infrastructure.**

**Provides necessary recommendations based on the findings.**

### Services:

- Inspection of the infrastructure (i.e. office building), the whole compound and its vicinity for possible vulnerability to theft or saboteurs
- Identification of possible vulnerable parts of the infrastructure, such as, but not limited to:
  - Fire-hazard materials
  - Unprotected areas from theft or saboteurs
  - Unprotected documents from theft or saboteurs
  - Unusable security equipment (i.e. CCTVs)
- Reporting of findings and recommendations to the recipient
- Re-inspection can also be done based on request of recipient or as directed by the NICA Home Office to evaluate if recommendations were applied
- Letter request to NICA-4 for the conduct of the program with the requested schedule
- Availability of the Head Security Officer of the said office for assistance to conducting SSI team

**Target Areas:** Government Agencies

**Development Partner:** NICA

# SECURITY SITUATION REPORT

## OBJECTIVES/MAIN AREAS OF ASSISTANCE

**Provides the recipient with information on the security situation of a certain area in a given period.**

### Services:

A 15-minute briefing on the security situation of a certain area in a given period

### Requirements:

- Letter request to NICA-4 for the conduct of the briefing with the preferred schedule and part in the program
- A venue conducive to the audience
- Projector for the presentations
- A clear sound system

**Target Areas:** Government agencies

**Development Partner:** NICA



## ORIENTATION ON THE COMMUNIST-TERRORIST GROUP (CTG) PROBLEM

### OBJECTIVES/MAIN AREAS OF ASSISTANCE



**National Intelligence Coordinating Agency Region IV**  
Camp Gen Macario Sakay, Brgy Lalakay, Los Baños, Laguna  
Contact No.: 0926-680-4454  
Email: nicanorlagun\_04@yahoo.com

**Provides the recipients with awareness on the CTG problem, the extent of CTG infiltration of the bureaucracy and other sectors of the society.**

#### **Services:**

A half-day or three-hour orientation from two resource persons with the presence of a community integrator for a testimonial talk. Afterwards, an open forum will be conducted for questions and inputs of the audience.

#### **Requirements:**

- Letter request to NICA-4 for the conduct of the orientation with the preferred schedule
- A venue conducive to the audience
- Projector for the presentations
- A clear sound system for the microphone and video-showing
- Notebook and pen for the audience

**Target Areas:** Government Agencies and Different Sectors of Society

**Development Partner:** NICA



# STATISTICAL SURVEY REVIEW AND CLEARANCE SYSTEM (SSRCS)

## OBJECTIVES/MAIN AREAS OF ASSISTANCE

To ensure conformity of surveys/censuses with standard definitions, concepts and classifications, and consequently, the reliability, comparability and accuracy of statistics generated out of said activities.

Statistical surveys contracted by government agencies to NGOs and private organizations are covered by the system.

Those surveys which are conducted by government agencies for their internal use, i.e., survey results will neither be published nor released to the general public, are exempted from review and clearance.

For guidelines and procedures, visit <https://psa.gov.ph/ssrcs>

### Target Areas:

LGUs and regional government offices

### Development Partner:

Philippine Statistics Authority



DEVELOPMENT  
ADMINISTRATION SECTOR

PHILIPPINE  
STATISTICS  
AUTHORITY





## INVENTORY OF STATISTICAL STANDARDS IN THE PHILIPPINES (ISSIP)

### OBJECTIVES/MAIN AREAS OF ASSISTANCE

A compilation of statistical standards used by various agencies in the Philippine Statistical System.

The inventory intends to serve as web-based knowledge center and reference system for statistical standards available for use of the general public.

It provides fundamental information on statistical standards such as official concepts and definitions, methodologies and procedures, formulas, source/s, classification systems, and indicators/statistics being generated, among others.

For more information, visit <https://psa.gov.ph/ISSiP>

#### Target Areas:

All agencies involved in planning, data collection, processing, analysis, dissemination and archiving.

#### Development Partner:

Philippine Statistics Authority

## BATCH REQUEST ENTRY QUERY SYSTEM (BREQS)

### OBJECTIVES/MAIN AREAS OF ASSISTANCE

The BREQS is a scheme where PSA authorizes a partner to receive requests for PSA-issued copies and certifications of civil registry documents from the public and issue the documents to its clientele.

The BREQS scheme will provide convenience to LGUs' constituents by filing their applications right at Local Civil Registry Office (LCRO), clientele need not travel to a distant Serbilis Outlet thereby saving them time, effort and money.

The LGU benefits from the scheme by expanding its services to clients, offering new services like CENOMAR. Also, the LCRO is no longer limited to serving its constituents only - even those coming from outside the locality can now be entertained, thus more revenue to the LGU.

#### Target Areas:

Local Civil Registry Office

#### Development Partner:

Philippine Statistics Authority  
Regional Statistical Services Office





INFRASTRUCTURE  
SECTOR

# DEPARTMENT OF ENERGY



**Philippine Statistics Authority IV-A  
Statistical Standards Division**  
Philippine Statistics Authority IV-A, Statistical Operation Division  
Ground Floor Building C., Fiesta World Mall,  
Marawoy, Lipa City, 4217, Batangas  
Telefax no.:(02)376-1928; (Telefax) (02)376-1931  
(043) 757-0812 (Telefax); (043) 756-0412  
Email: [ssd.staff@psa.gov.ph](mailto:ssd.staff@psa.gov.ph); [ssdss.staff@gmail.com](mailto:ssdss.staff@gmail.com)  
[psarssso4a@gmail.com](mailto:psarssso4a@gmail.com)



# ESTABLISHMENT OF ENERGY EFFICIENT AND CONSERVATION OFFICE (EECO) IN EACH LGU

## OBJECTIVES/MAIN AREAS OF ASSISTANCE

The EECO may be part of the Planning and Development Office of the LGU EECO to ensure compliance of the LGUs to RA 11285 and its IRR, the LEECP and all energy issuances.

### Services:

Oversees and monitors the implementation of the Local Energy Efficiency and Conservation Plan (LEECP) of LGUs.

**Target Areas:** 1st Class Cities and Municipalities

**Development Partners:** DOE-EUMB

# AUTO LPG PROGRAM

## OBJECTIVES/MAIN AREAS OF ASSISTANCE

To forge partnership between the government and industry stakeholders in the area of employment opportunity for LGU constituents and market supply infrastructure development to help in the mainstreaming of efficient and environment friendly alternative fuel vehicles (AFVs), specifically the auto LPG fuelled vehicles.

### Services:

- Assistance to SUCs in developing continuous supply of graduates as proficient human resource and sustained provision of technical education to prepare students become skillful workforce in the auto LPG transport sector

- To promote Energy Efficiency And Conservation Act (R.A. 11285)

The Act shall establish a framework for introducing and institutionalizing fundamental policies on energy efficiency and conservation, including the promotion of efficient judicious utilization of energy, increase in the utilization of energy efficiency and renewable energy technologies, and the delineation of responsibilities among various government agencies and private entities

### Target Areas:

Indang, Cavite and Nearby areas and vicinities

**Development Partners:** DOE-EUMB



DEPARTMENT OF ENERGY

## DESIGNATION OF ENERGY EFFICIENCY AND CONSERVATION OFFICER (EEC OFFICER)

TO BE THE HEAD OF EECO AS DESIGNATED FROM THE EXISTING PERSONNEL OF THE LGU

### OBJECTIVES/MAIN AREAS OF ASSISTANCE

**Oversees the implementation of the LEECP at the local government level.**

**Services:**

Capacity building of EEC Officer

**Target Areas:** 1st Class Cities and Municipalities

**Development Partner:** DOE

DEPARTMENT OF ENERGY

## DEVELOPMENT OF LOCAL ENERGY EFFICIENCY AND CONSERVATION ACT (LEECP)

### OBJECTIVES/MAIN AREAS OF ASSISTANCE

**A collaborative and multistakeholders comprehensive framework, governance structure, and programs prepared by the LGU for local energy efficiency and conservation with defined target, feasible strategies, and regular monitoring and evaluation.**

**Services:**

Capacity building of EEC Officer

**Target Areas:**

1st Class Cities and Municipalities

**Development Partner:** DOE



DEPARTMENT OF ENERGY

**SUPPORT LGU BY RECOMMENDING  
DOE'S ACCREDITED ENERGY SERVICE COMPANY (ESCO)**

SERVICES TO A MULTI-TECHNOLOGY SERVICES AND GOODS TOWARDS DEVELOPING AND DESIGNING ENERGY EFFICIENCY PROJECTS, DELIVERING AND GUARANTEEING ENERGY SAVINGS, AND ENSURING COST-EFFECTIVE AND OPTIMAL PERFORMANCE AT NO COST TO LGU (INVESTMENT) BASED ON THE PERFORMANCE CONTRACT

OBJECTIVES/MAIN AREAS OF ASSISTANCE

**Supports LGU to improve energy consumption and energy efficiency.**

**Target Areas:** 1st Class Cities and Municipalities

**Development Partner:** DOE

DEPARTMENT OF ENERGY

**DEVELOPMENT OF POLICY ORDINANCE ON THE IMPLEMENTATION OF EE & CAS AS A REQUIREMENT TO THE ISSUANCE OF BUILDING AND BUSINESS PERMIT**

OBJECTIVES/MAIN AREAS OF ASSISTANCE

**Income generation for LGUs**

**Target Areas:** 1st Class Cities and Municipalities

**Development Partner:** DOE

DEPARTMENT OF ENERGY

**DESIGNATION OF CERTIFIED ENERGY CONSERVATION OFFICER (CECO)**

FOR TYPE 1 DESIGNATED ESTABLISHMENTS AND CERTIFIED ENERGY MANAGER (CEM) FOR TYPE 2 DESIGNATED ESTABLISHMENTS

OBJECTIVES/MAIN AREAS OF ASSISTANCE

**Manages the energy consumption of facilities, equipment and devices.**

**Services:**

**Administer the following:**

- Implementation and improvement of energy efficiency measures
- Conduct of regular energy audit
- Energy monitoring and control
- Preparation of annual energy consumption and conservation reports

**Target Areas:** 1st Class Cities and Municipalities

**Development Partner:** DOE

DEPARTMENT OF ENERGY

**ENFORCE LGU TO ENSURE COMPLIANCE WITH THE PRESCRIBED RATINGS STANDARD FOR ENERGY PERFORMANCE IN BUILDINGS**

OBJECTIVES/MAIN AREAS OF ASSISTANCE

**To conduct regular energy audit.**

**Target Areas:** 1st Class Cities and Municipalities

**Development Partner:** DOE



## THE ASIA EDGE — ENHANCING DEVELOPMENT AND GROWTH THROUGH ENERGY INITIATIVE SUPPORTED BY THE USAID

### OBJECTIVES/MAIN AREAS OF ASSISTANCE

The Asia EDGE is a U.S. whole-of-government effort to grow sustainable and secure energy markets throughout the Indo-Pacific.

Asia EDGE seeks to strengthen energy security, increase energy diversification and trade, and expand energy access across the region.

Asia EDGE will draw on the expertise and resources of the U.S. government, private sector, and international financial institutions.

#### Objectives:

1. Strengthening the energy security of allies and partners
2. Creating open, efficient, rule-based, and transparent energy markets
3. Improving free, fair and reciprocal energy trading relationships
4. Expanding access to affordable, reliable energy

#### USAID programs under the Asia EDGE initiative include:

1. Clean Power Asia - harnessing the power of renewable energy for a sustainable ASEAN
2. Engendering Utilities - strengthening the Energy Sector through Gender Equality
3. Greening the Grid-guidance that addresses the technical challenges to grid modernization and presents state-of-the-art practices in bringing advanced energy technologies into the power sector

## IMPLEMENTATION OF THE FOLLOWING GUIDELINES IN THE LGU ON EE & C TECHNOLOGIES;

(A) ENERGY CONSERVING DESIGN FOR BUILDINGS AND UTILITY SYSTEMS VERSION 2020

(B) ROADWAY LIGHTING GUIDELINES

### OBJECTIVES/MAIN AREAS OF ASSISTANCE

Harmonizes with the other government agency (DPWH) the standards on Energy Conserving Design of Buildings and Utility Systems, Roadway Lighting Guidelines and such other related guidelines as may be issued by the DOE, in accordance with RA 6541 otherwise known as the National Building Code of the Philippines and other related laws.

**Target Areas:** 1st Class Cities and Municipalities

**Development Partner:** DOE





DEPARTMENT OF ENERGY

# ACCESS TO SUSTAINABLE ENERGY PROGRAMME (ASEP)

## OBJECTIVES/MAIN AREAS OF ASSISTANCE

**Focused on technical assistance in the form of policy advice, studies, trainings, and provision of tools to enhance power sector management through capacity of DOE and ERC towards policy and regulatory reforms, capacity building to NEA and ECs with special attention to Bangsamoro areas, advice on the least cost implementation of RE and EE strategies, and implementation of the National Energy Efficiency Roadmap, among others.**

**Grants have been given through Call for Proposals to promote sustainable business models and partnerships that link innovative energy solutions with job creation, livelihood, and productive uses, especially for poor households in off-grid areas. Investment support is administered by the World Bank to implement rural electrification using renewable energy.**

### Target Areas:

Focused on specific areas, depending on the needs and concerns of the LGUS

**Development Partners: DOE / European Union (EU)**

### Target Areas:

- Technical Assistance & Cooperative Activities in Indo-Pacific Region
- Energy Security and EnergyAccess
- Public and Private Investment
- Capacity Building/Training
- Market Investment & Modernization
- Expand professional development of women in energy
- National & Regional Government capacity to assess potential environmental or social impacts of power projects



**U.S. Agency for International Development**  
1300 Pennsylvania Avenue, NW Washington, DC 20523 USA  
Tel No.: (202)712-4728  
Email: [mglees@usaid.gov](mailto:mglees@usaid.gov)





**Energy Utilization Management Bureau (EUMB)**  
**Department of Energy (DOE)**  
Energy Center, Rizal Drive cor. 34th St., Bonifacio Global City,  
Taguig City, Metro Manila  
Tel: 8840-2289; 8479-2900  
Email: doe.eumb@gmail.com

**Renewable Energy Management Bureau**  
**Department of Energy Energy Center,**  
Rizal Drive cor. 34th St., Bonifacio Global City,  
Taguig City, Metro Manila  
Tel: 8479-2900 local 415  
Email: remb9513@doe.gov.ph



**EU-ASEP Technical Assistance Office**  
4th Floor, DOE Building, Rizal Drive, Bonifacio  
Global City, Taguig City, Metro Manila  
Tel: 8479-2900 Local 247  
Email: asepscretariat@giz.de

DEPARTMENT OF ENERGY

## DEVELOPMENT FOR RENEWABLE ENERGY APPLICATIONS MAIN STREAMING MARKET SUSTAINABILITY (DREAMS)

### OBJECTIVES/MAIN AREAS OF ASSISTANCE

**Build LGUs Capacity to enact local policies that will integrate Renewable Energy (RE) plans and projects into the Executive and Legislative Agenda through the DREAMS Local RE Planning Process and eventually support LGUs to encourage investments in RE Development under its Support Facility for Renewable Energy Projects (SF4RE)**

**Renewable Decade Report at the DOE website (for further appreciation)**

**Target Areas:** Off-grid areas and other areas with suitable RE resources to develop or support economic potential

**Development Partner:** DOE



# NATIONAL BROADBAND PLAN PROGRAM

## OBJECTIVES/MAIN AREAS OF ASSISTANCE

The Philippine government, developed the National Broadband Plan (NBP) to accelerate the deployment of fiber optic cables and wireless technologies, and improve the overall internet speed and affordability all over the country, particularly in remote areas.

The NBP addresses the clamor for universal, faster and affordable Internet Access has three major broad strategies, namely:

- Establishment of policy and regulatory reforms
- Government investment in broadband infostructure
- Support for the stimulation of broadband demand

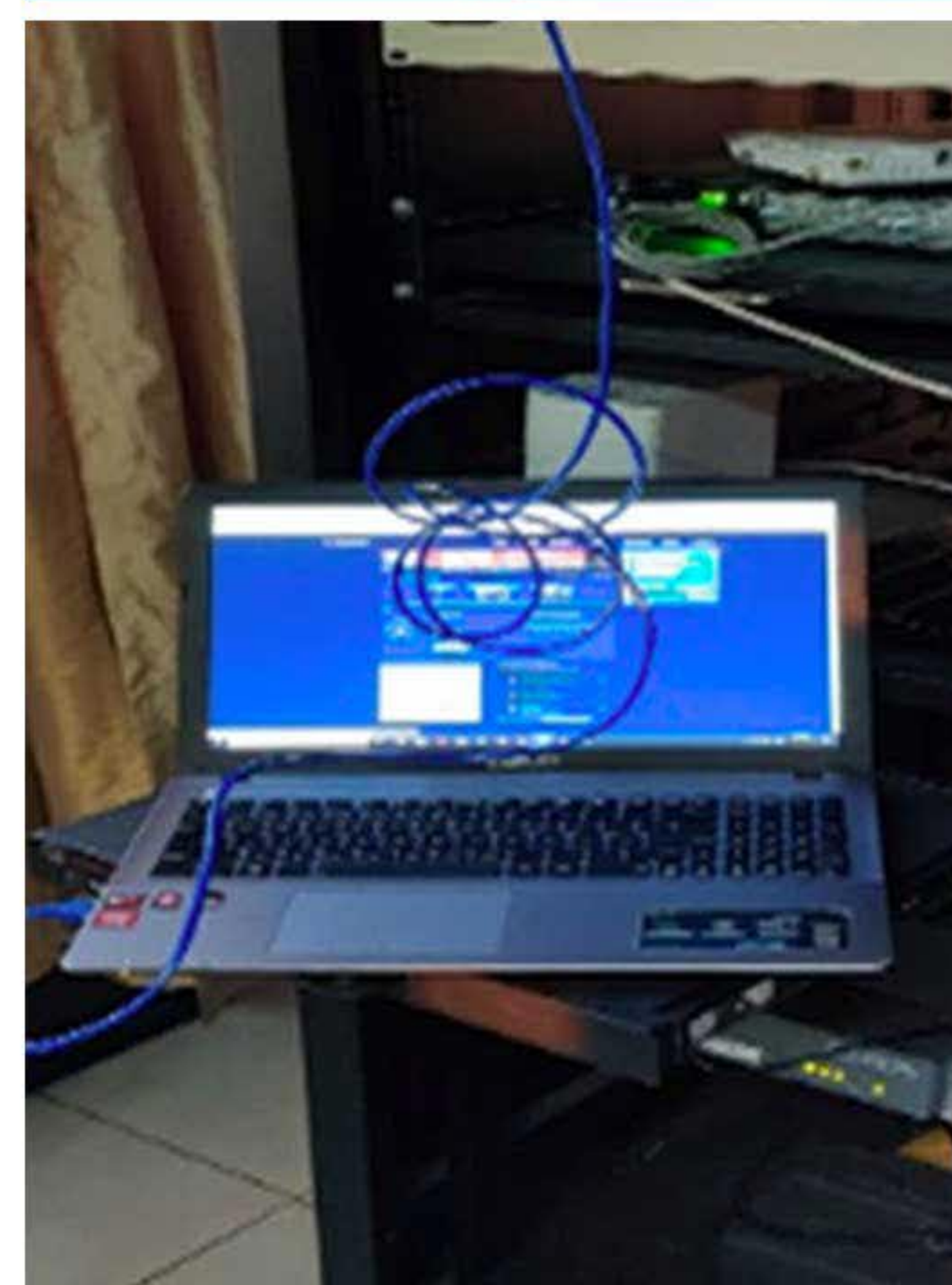
**Target Areas:** Priority Areas: Off-grid

**Development Partner:** DICT



DICT

## INFRASTRUCTURE SECTOR DEPARTMENT OF INFORMATION AND COMMUNICATIONS TECHNOLOGY





## FREE WI-FI FOR ALL (FREE WI-FI IN PUBLIC PLACES PROJECT)

### OBJECTIVES/MAIN AREAS OF ASSISTANCE

In response to the advocacy of the government to expedite the implementation of its free internet services, DICT Luzon Cluster 2 with the support of LGUs, has installed and activated Free Wi-Fi for All sites in State Universities and Colleges (SUCs) public hospitals, and COVID- 19 isolation facilities within the region.

Teachers and students can now avail the Free Wi-Fi for All in the campuses for their online classes, research, skills development, and self-paced online learning. In addition to that, frontliners and isolated individuals can stay connected to their loved ones through the program. Making sure that no one is left behind, DICT will continue to provide Free internet connectivity.

#### Target Areas:

- Public schools
- Public parks and Plazas
- Government Hospitals and RHUs
- Local Government Units
- Public Libraries
- State Universities and Colleges
- Seaports and Airports
- IT-BPM Industry

**Development Partner:** DICT/ Locally Funded Project



#### Department of Information and Communications Technology

3rd Floor, Narita Building, Gardenville Subdivision,  
MacArthur Highway Brgy. Pio Cruzcosa, Calumpit Bulacan  
Tel No.: (044) 792 5847  
Email: rey.sy@dict.gov.ph





INFRASTRUCTURE SECTOR  
DEPARTMENT OF TOURISM  
**TOURISM INFRASTRUCTURE  
THROUGH D.R.E.A.M.S. THRUST  
(TIEZA)**

OBJECTIVES/MAIN AREAS OF ASSISTANCE



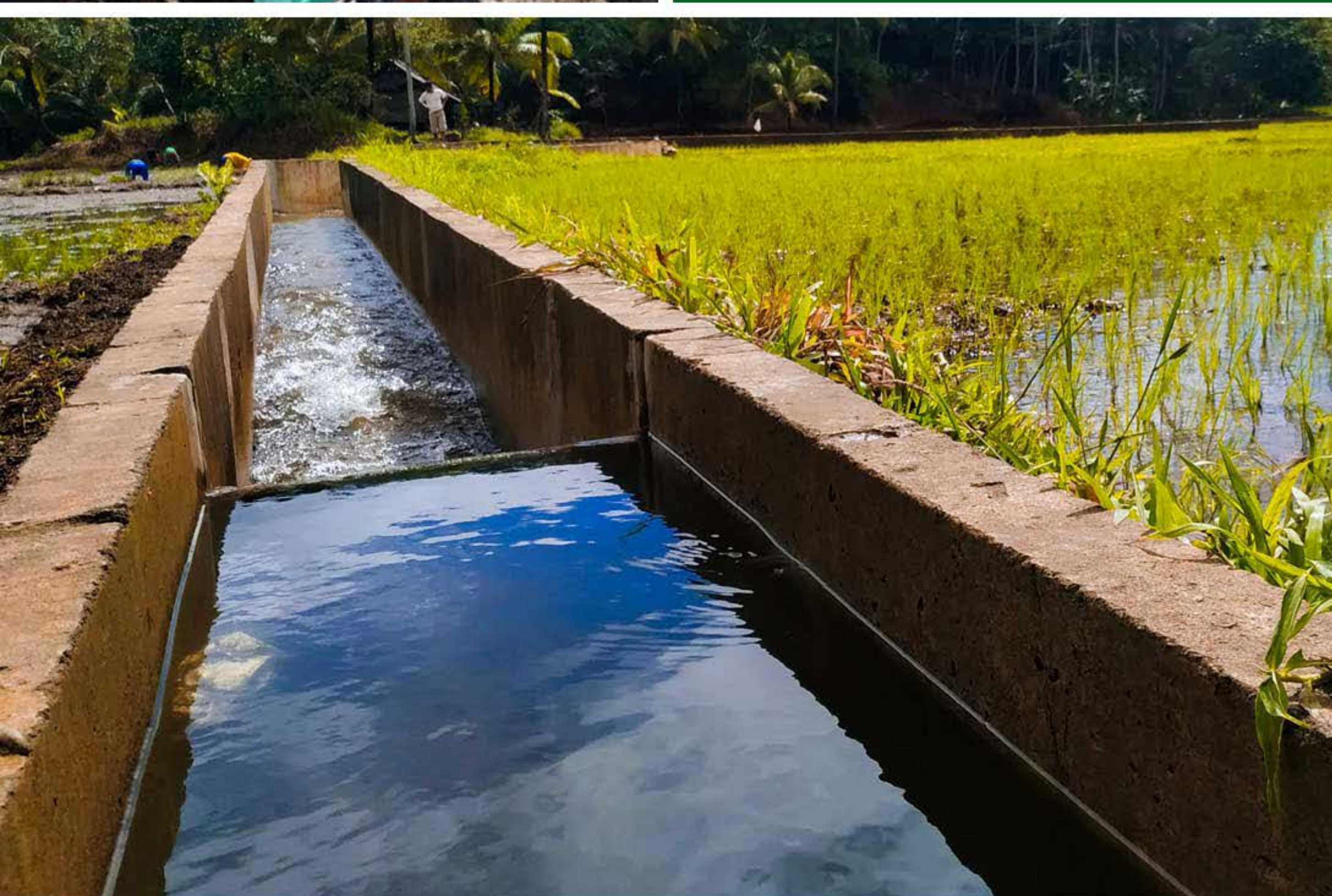
INFRASTRUCTURE  
SECTOR

**NATIONAL  
IRRIGATION  
ADMINISTRATION**

Construction of tourism infrastructure projects of national interest and significance through the D.R.E.A.M.S thrust - Destination, Restoration, Eco-sustainability, Agri-tourism, Medical Assistance, and Security and Accessibility.

Target Areas: CALABARZON

Development Partners: DOT and TIEZA



**Department of Tourism**  
G/F Dencris Business Building, National Highway  
Barangay Halang, Calamba City, Laguna 4027  
Tel.No.: (049) 508 – 0741 (0747; 0748)  
Email: dot4a@tourism.gov.ph



## TECHNICAL ASSISTANCE ON COMMUNAL IRRIGATION DEVELOPMENT TO LGU AND OTHER PARTIES

### OBJECTIVES/MAIN AREAS OF ASSISTANCE

As a result of devolution, NIA extends technical assistance on communal irrigation development to local government units (LGU). These LGUs include those with financial resources to implement their communal projects, and those with technical capabilities as well. The assistance to LGUs range from pre-construction to construction to operation and maintenance activities. This is at different levels of feasibility studies, civil works and operation, including institutional development. NIA staff also visit project sites. Technology transfer is affected in the process. NIA also extends technical assistance to other government and private parties which have concerns on irrigation development and management. LGUs and other parties desiring to seek technical assistance may contact NIA's regional and provincial irrigation offices nationwide.

#### Target Areas:

Farmers' Group / Irrigators' Associations / Municipalities in CALABARZON

#### Development Partner:

National Irrigation Administration Region IV-A

## REQUEST FOR IRRIGATIONS SYSTEMS (NEW AREAS & EXTENSION)

### OBJECTIVES/MAIN AREAS OF ASSISTANCE

Promote agricultural productivity by establishing an efficient and sustainable irrigation systems.

#### Target Areas:

Farmer Groups / Irrigator Associations / Municipalities in CALABARZON

#### Development Partner:

National Irrigation Administration Region IV-A under GAA

## REQUEST FOR MINOR REHABILITATION RESTORATION OF EXISTING IRRIGATION SYSTEMS

### OBJECTIVES/MAIN AREAS OF ASSISTANCE

NIA rehabilitates national and communal irrigation systems to address the wear and tear of irrigation facilities and structures. Rehabilitation entails the reconstruction or restoration of irrigation and drainage facilities to their original design. It can also include the expansion of service areas and provision of additional structures like adequate control structures, drainage systems, on-farm facilities, and service roads.

#### Target Areas:

Farmer Groups / Irrigator Associations / Municipalities in CALABARZON

#### Development Partner:

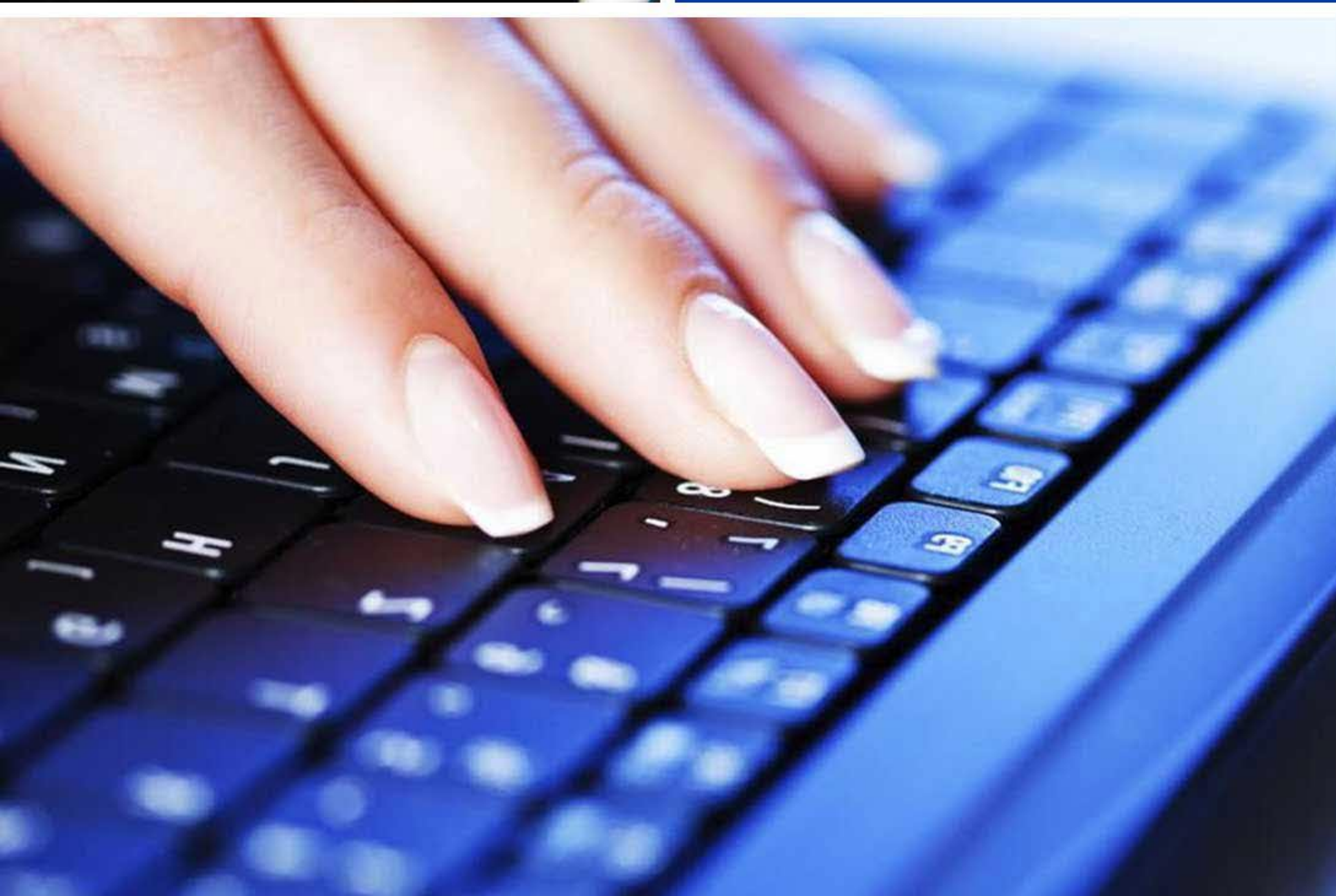
National Irrigation Administration Region IV-A under GAA





**INFRASTRUCTURE  
SECTOR**

**NATIONAL  
TELECOMMUNICATIONS  
COMMISSION**



**National Irrigation Administration Region IV-A**  
Office Address: Pila, Laguna  
Tel.: (049) 559 0727 / 559-0726  
Email: niaregioniva@yahoo.com

NIA Quezon Irrigation Management Office  
Office Address: Lucena City, Quezon  
Tel.: (042) 710 2422 | 3470  
Email: niaqimo@gmail.com

NIA Laguna-Rizal IMO  
Office Address: Pila, Laguna  
Tel.: (049) 559 0735  
Email: nia\_liso@yahoo.com

NIA Cavite-Batangas IMO  
Office Address: Naic, Cavite  
Tel.: (046) 412 0282 | 0448  
Email: cavitebatngasimo@yahoo.com



## ACQUISITION OF RAPIDLY DEPLOYABLE COMMUNICATION SYSTEM

### OBJECTIVES/MAIN AREAS OF ASSISTANCE

Provide immediate communications that link "ground zero" to the outside and independent and stand-alone operations primarily during emergencies and disasters to augment communication links between responders especially when communication systems are down.

**Target Areas:** Within the area of jurisdiction of NTC Region 4

**Development Partner:** NTC

## NTC FIXED AND MOBILE BENCHMARKING SYSTEM

### OBJECTIVES/MAIN AREAS OF ASSISTANCE

Addresses the rules on the measurement of Fixed Broadband Internet Access Service.

#### Services:

Monitor and measure the following parameters of internet quality from the perspective of a customer

- Downstream and Upstream average data rate
- Latency
- Jitter
- Packet loss

**Target Areas:** Within the area of jurisdiction of NTC Region 4

**Development Partner:** NTC



NATIONAL TELECOMMUNICATIONS COMMISSION

## ACQUISITION OF MULTIBAND NETWORK SCANNING RECEIVER AND POST PROCESSING TOOLS

| OBJECTIVES/MAIN AREAS OF ASSISTANCE



### **National Telecommunications Commission Region 4**

Diversion Road, Bolbok, Batangas City

Tel No.: (043) 723 2495

Email: ntc4@yahoo.com

**Determines whether Public Telecommunication Entities are operating within the authorized frequency channels as stipulated in the radio station license issued by NTC.**

**Target Areas:** Within the area of jurisdiction of NTC Region 4

**Development Partner:** NTC



# PROVISION OF LIVELIHOOD PROJECT FUNDING ASSISTANCE

## OBJECTIVES/MAIN AREAS OF ASSISTANCE

**Provision of livelihood assistance to qualified beneficiaries through the Local Government Units (LGUs)**

**Services:**

Provides employment and entrepreneurship opportunities to displaced, disadvantaged, and unemployed workers

**Requirements:**

1. Application letter
2. Detailed Project Proposal
3. Board or Sangguniang Bayan (SB) Resolution (for MOA)
4. Memorandum of Agreement (MOA) between the two (2) parties
5. Individual beneficiary profile
6. Beneficiaries' Certification of Non-coverage to Pantawid Pamilya Pilipino Program (4Ps)
7. Local Development Plan (copy of relevant portion on employment, social services)
8. Copy of Seal of Good Local Governance
9. Certification from the DOLE Regional Office's Accountant, and
10. Certification issued by the authorized official designating a Focal Person

**Target Areas:** CALABARZON

**Development Partner:** DOLE



**SOCIAL SECTOR**

# DEPARTMENT OF LABOR AND EMPLOYMENT





## SPECIAL PROGRAM FOR EMPLOYMENT OF STUDENTS (SPES)

### OBJECTIVES/MAIN AREAS OF ASSISTANCE

The Special Program for Employment of Students is DOLE's youth employment-bridging program which aims to provide temporary employment to poor but deserving students, out-of-school youth, and dependents of displaced or would-be displaced workers during summer and/or Christmas vacation or any time of the year to augment the family's income to help the beneficiaries to pursue their education.

- Business Registration Assistance - facilitates all registration applications of MSMEs, the Philippine Business Registry (PBR) and Barangay Micro Business Enterprise (BMBE)
- Business Advisory Services - provides advisory services for MSMEs on product development, trade promotion, financing facilitation, investment promotion, and SME counseling
- Business Information and Advocacy - provides information on market, suppliers, buyers, government assistance programs, etc.; and conduct trainings and seminars
- Monitoring and Evaluation - monitor and recommend business-process improvement for MSMEs and establish a feedback mechanism among the MSMEs in the respective jurisdiction of Negosyo Centers

#### Target Areas:

- LGUs employing at least ten (10) persons that decided to participate in SPES
- Participating employers, natural or juridical persons, authorized to operate business in the Philippines or created under the laws of the Philippines

**Development Partner:** DOLE



#### Department of Labor and Employment Regional Office IV-A

3rd and 4th Floors Andenson Building 2, Parian,  
Calamba City, Laguna

Tel.: (049) 545-7360 | Fax: (049) 545-7357

Email: [dole4imsd@yahoo.com](mailto:dole4imsd@yahoo.com)



DEPARTMENT OF SOCIAL WELFARE AND DEVELOPMENT

# PANTAWID PAMILYANG PILIPINO PROGRAM (4PS)

OBJECTIVES/MAIN AREAS OF ASSISTANCE

Provides conditional cash grants to the poorest of the poor, to improve the health, nutrition, and the education of children aged 0-18.

## Services:

- Social assistance - giving monetary support to extremely poor families
- Social development - breaking the intergenerational poverty cycle by investing in the health and education of poor children

Target Areas: CALABARZON

Development Partner: DSWD



SOCIAL SECTOR  
**DEPARTMENT OF SOCIAL WELFARE AND DEVELOPMENT**





# SUSTAINABLE LIVELIHOOD PROGRAM (SLP)

## OBJECTIVES/MAIN AREAS OF ASSISTANCE

**A community-based capacity building effort that seeks to improve the program participants' socio-economic status through two tracks: Micro-enterprise Development and Employment Facilitation.**

**The MD track utilizes a microcredit financing scheme whereas the EF track facilitates the employment of participants through job matches and skills trainings.**

To reduce poverty and inequality by generating employment among poor households and by providing sustainable livelihoods to highly vulnerable households to achieve economic stability.

**Target Areas:** CALABARZON

**Development Partner:** DSWD

# KAPIT-BISIG LABAN SA KAHIRAPAN- COMPREHENSIVE AND INTEGRATED DELIVERY OF SOCIAL SERVICES / NATIONAL COMMUNITY-DRIVEN DEVELOPMENT PROGRAM (KALAHI-CIDSS/ NCDDP)

## OBJECTIVES/MAIN AREAS OF ASSISTANCE

**To empower barangay/communities in target municipalities to improve access to social services and participate in more inclusive local planning, budgeting, and implementation.**

KALAHI-CIDSS has the following features:

- Assistance for social preparation and capability building training for LGUs and communities
- Support funding through community grants. The funds will be released directly to the community accounts
- Transparency and Accountability Measures. Citizens other than public officials are involved in local planning and decision-making
- Community-chosen priorities are turned into projects, plans and activities and feed into the budgeting process, planning and programming of LGUs and NGAs
- Allowable community projects. KC-NCDDP follows an open menu system. However, it has a set of disallowed activities, specified on the Negative List
- Post-disaster response in covered municipalities declared as disaster-affected

**Target Areas:** Select LGUs - Quezon Province

**Development Partner:** DSWD



# CASH GRANT FOR CENTENARIANS

OBJECTIVES/MAIN AREAS OF ASSISTANCE

Under Republic Act 10868 or the Centenarian Act of 2016, senior citizens who reach the age of 100, will receive a one-time cash grant of PHP100,000 to honour Filipino centenarians residing in the Philippines and abroad.

Target Areas: CALABARZON

Development Partner: DSWD

# SOCIAL PENSION PROGRAM FOR INDIGENT SENIOR CITIZENS

OBJECTIVES/MAIN AREAS OF ASSISTANCE

Additional government assistance in the amount of Five Hundred Pesos (PHP500.00) monthly stipend, to augment the daily subsistence and other medical needs of indigent senior citizens. Its main objective is to improve the living condition of indigent senior citizens.

Target Areas: CALABARZON

Development Partner: DSWD



## RECOVERY AND REINTEGRATION PROGRAM FOR TRAFFICKED PERSONS (RRPTP)

### OBJECTIVES/MAIN AREAS OF ASSISTANCE

A comprehensive package of programs and services for the victims-survivors of trafficking to ensure their recovery and prevent other family and community members from being victims of trafficking through improved community based systems and mechanisms.

Target Areas: CALABARZON

Development Partner: DSWD

## SUPPLEMENTARY FEEDING PROGRAM (SFP)

### OBJECTIVES/MAIN AREAS OF ASSISTANCE

Provision of food in addition to the regular meals to children currently enrolled in the day care centers as part of the DSWD's contribution to the Early Childhood Care and Development (ECCD) program. Its main objective is to provide supplementary feeding to children aged 2-12 years old using indigenous foods and/or locally processed foods equivalent to 1/3 of Recommended Energy and Nutrient Intake (RENI).

Target Areas: CALABARZON

Development Partner: DSWD



**COMPREHENSIVE PROGRAM FOR STREET CHILDREN,  
STREET FAMILIES, AND INDIGENOUS PEOPLE (IPS),  
ESPECIALLY BADJAOS AND SHIELD AGAINST CHILD LABOR**

**| OBJECTIVES/MAIN AREAS OF ASSISTANCE**

**Develops income generating opportunities and skills training for children and their families to prevent them from working on the streets, creates activity centers where they could have life skills trainings and literacy activities, and provides shelter assistance for them to permanently leave the streets and to eventually gain access to basic social services.**

Under SHIELD, the DSWD will help LGUs to establish a functional Local Child Labor Local Registration System and a Barangay Help Desk. SHIELD will also capacitate LGUs to develop effective advocacy and capacity-building strategies.

**Target Areas: CALABARZON**

**Development Partner: DSWD**

**ASSISTANCE TO INDIVIDUALS IN  
CRISIS SITUATIONS (AICS)**

**| OBJECTIVES/MAIN AREAS OF ASSISTANCE**

**Integrated services such as provision of financial and material assistance to individuals/families in crisis or difficult situations to meet their food requirement while in hospital. It will also provide transportation assistance when traveling back to their hometown/destination as well as medical, burial and educational assistance.**

**Target Areas: CALABARZON**

**Development Partner: DSWD**



# OPERATION OF FOUR CENTERS

OBJECTIVES/MAIN AREAS OF ASSISTANCE

**Residential Care Facilities - Provide 24-hour residential care to individuals whose needs cannot be met by their own families and relatives:**

- Bahay Tuluyan ng mga Bata (Home for Girls) (BT) - a residential institution established to provide care, protection and rehabilitation to girls ages 5 to 17 years old who are victims of sexual abuse (rape, incest, acts of lasciviousness, sexual exploitation) exploitation, abandonment, negligence and physical abuses and maltreatment
- The Regional Haven for Women and Girls (RHWG) - an alternative form of family care providing 24-hour group living on temporary basis to disadvantaged and abused women and their qualified dependent whose needs cannot be adequately met by their own families and relatives over a period of time
- National Training School for Boys (NTSB) –The NTSB enables Children in Conflict with the Law (CICL) to benefit from an intensive treatment of their deviant behavior and anti-social attitudes in a residential setting and prepare them for successful adjustment with their families and community after discharge
- Haven for the Elderly (HE) - A residential facility that provides care to senior citizens ages 60 years old and above, both male and female who are abandoned, neglected and needy

**Target Areas:** CALABARZON

**Development Partner:** DSWD

# DISASTER RESPONSE ASSISTANCE AND MANAGEMENT

OBJECTIVES/MAIN AREAS OF ASSISTANCE

**Disaster Response Assistance and Management has the following objectives:**

- Inter-agency coordination during disaster response through the National Disaster Risk Reduction and Management Council (NDRRMC) Response Pillar
- Provision of Social Protection Services including relief assistance, evacuation camp coordination and management, and Internally Displaced Person (IDP) Protection

**Target Areas:** CALABARZON

**Development Partner:** DSWD



## MINORS TRAVELING ABROAD (MTA)

### OBJECTIVES/MAIN AREAS OF ASSISTANCE

Minors (children below 18 years old) who are traveling abroad alone or without their parents must secure a travel clearance from the DSWD Field Office assigned in their area

The primary objective of the issuance of travel clearance is to protect minors from trafficking, abuse, exploitation or harmful influence by person/s engaged in trafficking.

**Target Areas:** CALABARZON

**Development Partner:** DSWD

## UNCONDITIONAL CASH TRANSFER (UCT)

### OBJECTIVES/MAIN AREAS OF ASSISTANCE

Provide cash grants to poor households who may not benefit from the tax cuts provided by TRAIN but may be affected by rising prices. The beneficiaries will receive P200 a month as the subsidy for 2018, and PHP300 a month for 2019 and 2020.

The pool of UCT beneficiaries is composed of (a) households in the *Pantawid Pamilyang Pilipino Program* (4Ps), (b) beneficiaries of the Social Pension Program under the Senior Citizens Act, and (c) other poor households as identified by the Department of Social Welfare and Development (DSWD) through the National Household Targeting System for Poverty Reduction (NHTS-PR), also known as *Listahanan*.

**Target Areas:** CALABARZON

**Development Partner:** DSWD





SOCIAL SECTOR  
**NATIONAL  
COMMISSION  
FOR CULTURE  
AND THE ARTS**



**DSWD**  
Department of Social Welfare and Development

**Department of Social Welfare and Development Region IV-A**  
Alabang-Zapote Road Muntinlupa City  
Tel.: 8850-8380  
Email: [elrogado@dswd.gov.ph](mailto:elrogado@dswd.gov.ph), / [rspu\\_dswd4a@yahoo.com](mailto:rspu_dswd4a@yahoo.com),  
[mlrtabios@dswd.gov.ph](mailto:mlrtabios@dswd.gov.ph)



# TECHNICAL ASSISTANCE PROGRAM

## OBJECTIVES/MAIN AREAS OF ASSISTANCE

Provide immediate assistance to legitimate organizations and cultural activities with the intention of providing appropriate arts and culture education and training and technical assistance.

Encourage, support the continuous training and updating of artists and cultural workers, and ensure decentralization of cultural opportunities.

### Target Areas:

For guidelines and procedures please, visit <https://ncca.gov.ph/about-ncca-3/technical-assistance-program/>

### Development Partner:

Per its mandate, the NCCA shall

# GRANTS PROGRAM FOR THE DEVELOPMENT, PROTECTION, PRESERVATION AND DISSEMINATION OF PHILIPPINE CULTURE AND THE ARTS

## OBJECTIVES/MAIN AREAS OF ASSISTANCE

Give grants for the development, protection, preservation and dissemination of Philippine culture and the arts.

### Target Areas:

For guidelines and procedures for application, please visit <https://ncca.gov.ph/about-ncca-3/grants-program/>

### Development Partners:

NCCA through the administration of the National Endowment Fund for Culture and the Arts (NEFCA)



# OUTREACH PROGRAM

## OBJECTIVES/MAIN AREAS OF ASSISTANCE

To encourage and support programs such as productions, performances and staging of Filipino creations.

To ensure the widest dissemination of artistic and cultural products among the greatest number across the country for the public's appreciation and enjoyment.

### Target Areas:

For guidelines and procedures please, visit [www.ncca.gov.ph](http://www.ncca.gov.ph)

Development Partner: NCCA

# CULTURAL MAPPING PROJECT

## OBJECTIVES/MAIN AREAS OF ASSISTANCE

1. To understand basic frameworks on culture and heritage in the context of Republic Act 10066 or the National Cultural Heritage Act of 2009 and other laws and mandates
2. To appreciate the value of the various cultural resources of the community
3. To apply the different tools and methods for gathering, classifying, and analyzing local cultural data and information
4. To consolidate Local Culture Profile and generate baseline data for cultural statistics
5. To recommend mechanisms to integrate profiles and baseline statistics in LGU development plans, programs and activities

### Target Areas:

For guidelines and procedures please, visit [www.ncca.gov.ph](http://www.ncca.gov.ph)

### Development Partners:

NCCA through NEFCA or GAA



# MULTI-SECTOR

DEPARTMENT OF INFORMATION  
AND COMMUNICATIONS TECHNOLOGY

# TECH4ED PROJECT

OBJECTIVES / MAIN AREAS OF ASSISTANCE



Tech4ED project is a shared facility providing access to eGovernment, ICT enabled services and relevant content.

Aims to build the capability of Tech4ED Center Knowledge workers, such as the Center manager, technical and administrative support staff, on the navigation of Tehc4ED platform and in the areas of planning, managing and sustaining the operation of the Tech4ED Center.

Tech4ED thrives to deliver ICT services to the marginalized sectors in the countryside.

## Target Areas:

Within the area of Jurisdiction of DICT Region 4A

## Contact Details

Department of Information and Communications  
Technology

**Office Address** : 3rd Floor, Narita Building, Gardenville Subdivision,  
MacArthur Highway Brgy. Pio Cruzcosa, Calumpit  
Bulacan

**Contact No.** : Tel No.: (044) 792 5847

**Email address** : [rey.sy@dict.gov.ph](mailto:rey.sy@dict.gov.ph)

**Development  
Partner** : DICT/LGUs



**National Commission for Culture and the Arts (NCCA)**  
Office of the Deputy Executive Director  
Sub-Commission on Cultural Heritage Office  
3/F NCCA Bldg., 633 General Luna Street, Intramuros, Manila

Direct line: 8527-2214/527-2198 / Trunk lines: 8527-2192  
Local 522/502 Telefax no. 8527-2193 / Outreach Program local 501

Email: [info@ncca.gov.ph](mailto:info@ncca.gov.ph) / [ppfpd@ncca.gov.ph](mailto:ppfpd@ncca.gov.ph)  
[oed@ncca.gov.ph](mailto:oed@ncca.gov.ph) / [cathee\\_sg@yahoo.com](mailto:cathee_sg@yahoo.com)  
[ncca.culturalheritage@gmail.com](mailto:ncca.culturalheritage@gmail.com)



# MULTI-SECTOR

ASIAN DEVELOPMENT BANK

# JAPAN FUND FOR POVERTY REDUCTION (JFPR)

OBJECTIVES / MAIN AREAS OF ASSISTANCE



**Add substantive value and development impact to ADB assistance through grants for poverty reduction.**

## Project Grants

- Support well-targeted poverty reduction and social development activities that have a direct impact on the poor and on socially or economically excluded or vulnerable groups; stimulate the self-help capacities of the poor
- Stimulate widespread stakeholder participation at the community level;
- Provide a systematic impact on operations and approaches toward Sustainable poverty reduction

## Target Areas Grants

- Enhance the capacity of executing agencies and other development partners, including implementing and operating projects
- Formulate and coordinate development strategies, plans, and programs, and undertake studies related to sectors, policies, and issues
- Improve knowledge about development issues in Asia and the Pacific and foster inclusive growth, environmentally sustainable growth, and regional cooperation and integration among DMCs

Identify, formulate, and prepare development projects

**Target Areas:** All ADB DMCs are eligible for JFPR grants

**Development Partner:** Asian Development Bank (ADB)



## Department of Information and Communications Technology

3rd Floor, Narita Building, Gardenville Subdivision,  
MacArthur Highway Brgy. Pio Cruzcosa, Calumpit Bulacan  
Tel No.: (044) 792 5847  
Email: [rey.sy@dict.gov.ph](mailto:rey.sy@dict.gov.ph)





# MULTI-SECTOR

DEPARTMENT OF FOREIGN AFFAIRS

## PEREZ-GUERRERO TRUST FUND FOR ECONOMIC AND TECHNICAL COOPERATION AMONG DEVELOPING COUNTRIES

OBJECTIVES / MAIN AREAS OF ASSISTANCE

### Provide seed money for:

- Financing pre-investment/ feasibility studies/reports prepared by professional consultancy organizations in developing country-members of the Group of 77
- Facilitating the implementation of projects within the framework of the Caracas Programme of Action of ECDC

Project proposals submitted for funding from PGTF should address sectoral priorities contained in the Caracas Programme of Action - trade, technology, food and agriculture, energy, raw materials, finance and industrialization and technical cooperation among developing countries, as well as the Havana Programme of Action in the areas of South-South cooperation.



### The JFPR Team

Office of Cofinancing Operations Asian Development Bank

Tel +63 2 632 6527/632 1656/632 1651

Email: [jfpr@adb.org](mailto:jfpr@adb.org) / [cofinancing@adb.org](mailto:cofinancing@adb.org)

[www.adb.org/jfpr](http://www.adb.org/jfpr)





**Office of United Nations and Other International Organizations**  
**Department of Foreign Affairs**  
2330 Roxas Blvd., Pasay City  
Tel: 834-4890 / Fax: 832-3245  
[www.g77.org/pgtf](http://www.g77.org/pgtf)

**Technical Cooperation Council of the Philippines**  
**Department of Foreign Affairs**  
2330 Roxas Blvd., Pasay City  
Tel: 8834-3129 / Fax: 8834-4177  
[www.g77.org/pgtf](http://www.g77.org/pgtf)

### **Target Areas:**

For guidelines and procedures for application for funding, please visit: <http://www.g77.org/pgtf/>

Projects that are of national nature would not be eligible for financing. For nationally executed projects to be eligible, the cooperative component of the project has to be established through the identification and declared interest of and explicit participation by other developing countries as potential beneficiaries in the activities of the project, as appropriate. Accordingly, written evidence of endorsement or declared interest should be part of the proposal. The Committee of Experts would not consider proposals failing to comply with this requirement.

Cooperative projects can be carried out on a sub-regional, regional or inter-regional basis, with a minimum of three (3) participating countries. Therefore, projects that are of a bilateral nature are not eligible for funding.

**Development Partner: DFA**



- **Capacity Building**

Construction or renovation of training facilities and procurement of equipment for the conduct of skills and livelihood training activities

- **Disaster Management**

Procurement of ambulance, fire trucks, rescue trucks and procurement of used emergency vehicles from Japan

- **Waste Management**

Procurement of garbage processing equipment and construction of materials recovery facility.

**Target Areas:**

NGOs, POs, cooperatives, LGUs, educational institutions (universities) and medical institutions For guidelines and concept paper format, please visit:  
<http://www.ph.emb-japan.go.jp/bilateral/oda/grassroots.htm>

**Development Partner:** GOJ / Embassy of Japan

## MULTI-SECTOR

GOVERNMENT OF JAPAN



## GRANT ASSISTANCE FOR GRASSROOTS HUMAN SECURITY PROJECT [GENERAL GRANT PROGRAM (GGP)]

### OBJECTIVES / MAIN AREAS OF ASSISTANCE

**Support small-scale projects directly benefiting the grassroots level as well as contributing to the socio-economic development of developing countries**  
**Priority is given to the following areas:**

- **Education**

Construction or renovation of classroom buildings, and procurement of furniture and equipment for elementary and secondary schools

- **Health**

Construction or improvement of health facilities and procurement of basic medical equipment for public hospitals, rural health units, and barangay health stations

- **Water System (Levels I and II only)**

Construction of Levels I and II water systems [Level I: Stand-alone water points (e.g., hand pumps, shallow wells, and rainwater collectors; and Level II: Piped water with a communal water point (e.g., bore well, spring system)]

- **Agriculture**

Construction or improvement of food processing center and construction and/or procurement of pre and post-harvest facilities/equipment

- **Social Welfare**

Construction or improvement of crisis centers or shelters





# MULTI-SECTOR

## MUNICIPAL DEVELOPMENT FUND OFFICE

# LGU LOAN FINANCING UNDER THE MUNICIPAL DEVELOPMENT FUND OFFICE (MDFO)

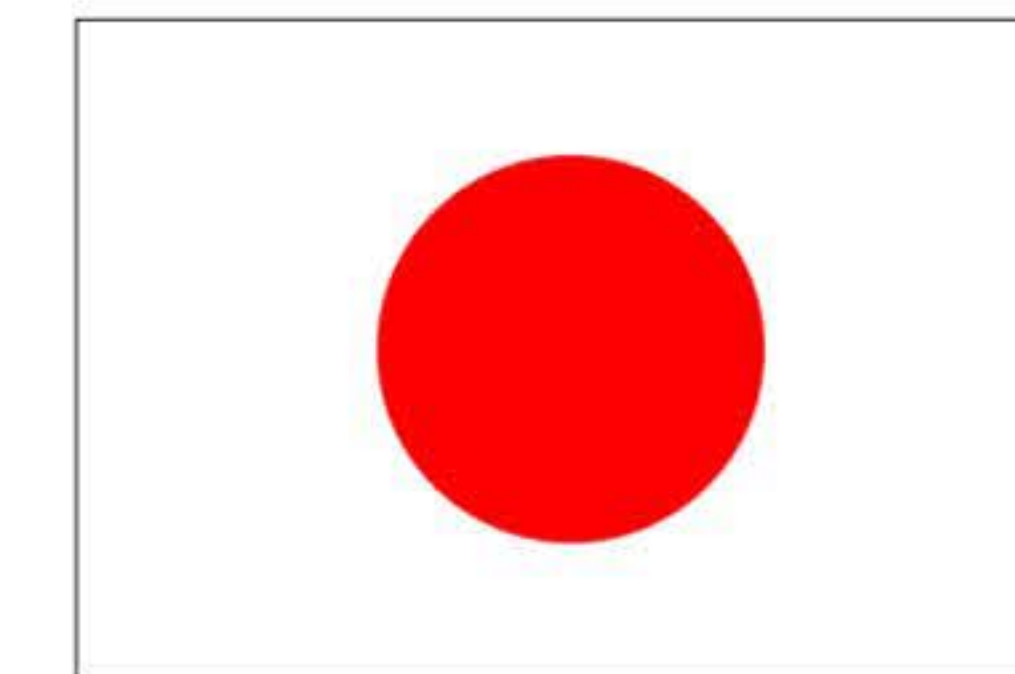
### OBJECTIVES / MAIN AREAS OF ASSISTANCE

Provides financial and technical assistance to LGUs with proposed development projects. It includes the analysis of the following aspects in relation to project development: social, environmental, institutional, engineering/technical, economic and financial.

## MDFO Financing Facilities Available for LGUs

### 1. Municipal Development Fund Project (MDFP)

Objectives/Main Areas of Assistance: Concessional financing assistance to ALL (except barangays) LGUs for basic urban infrastructures to improve the delivery of basic services.



**JAPAN GOV**  
THE GOVERNMENT OF JAPAN

**Economic Section Embassy of Japan**  
2627 Roxas Blvd., Manila PO Box 414 Pasay Post Office  
The GGP Team Embassy of Japan  
Tel: (02) 8551-5710 loc 2112 / 2111/2119  
Email: [ggp@ma.mofa.go.jp](mailto:ggp@ma.mofa.go.jp) /  
web: [www.ph.emb-japan.go.jp](http://www.ph.emb-japan.go.jp)



**Environmental Projects** – Reforestation, Soil Conservation, Mangrove and Watershed Protection, River and Seashore Protection, Ecotourism Project, Freedom Parks, Reforestation and Agro-forestry, Watershed Protection, Biodiversity Conservation and other related environmental related initiatives

**Solid Waste Management, Sewerage, and Sanitation Facilities** – Materials Recovery Facilities, Recycling Plant, Sanitary Landfills, Drainage System, Sewerage and Sanitation Support Facilities, Wastewater Treatment Facility, Public Sanitary Toilets, Waste-to-Energy Facilities, Sewerage and Septage Management and other related facilities and equipment

## 2. **Disaster Management Assistance Fund (DMAF)**

Objectives/Main Areas of Assistance: Provide financial support for DRM initiatives of LGUs and enhance community resilience to disaster

### **Target Areas:**

#### **Disaster Mitigation**

#### **Soft Component:**

DRM-related training/capacity building activities; Hazard Mapping; Vulnerability Assessment; Risk Mapping; Conduct of local assessment to LGU capacity and vulnerability to natural disasters; Cost to be incurred in preparing for Mainstreaming of Climate Change and DRR into local development plans and programs; Preparation of Comprehensive Land Use Plan; Development of Local Disaster Risk Reduction and Management Plan (LDRRMP); Contingency Planning; Conduct of community drills/exercises; Augmentation for health-related epidemics (i.e., outbreaks on diarrhea, dengue, etc.); and Development of IEC and other advocacy materials

### **Target Areas:**

- **Public Economic Enterprise/Revenue-Generating** – Public Market, Commercial Centers and Other Public Economic Enterprise, Trading Post (Bagsakan Center), Slaughterhouse, Bus and Jeepney Terminals, Municipal Wharves and Fish Ports, Dry Port, Sea Port, Cargo Port, Barge, Roll-on/Roll-off (RORO), Airport Strip, Post-Harvest Facilities, Cold Storage Facilities, Ice Plants, Cemetery/Public Memorial Parks, Crematorium, Columbarium, Funeral Services, Level III Water Supply System, Toll Roads, Local Electrification such as Mini-Hydro Electric Power Plant, Wind Power and Solar Energy, Income Generating Policy Reform-Related Initiatives (i.e. RPTA Computerization, One-Stop Shop Taxpayers System, etc.), Microfinance and Livelihood Projects, Food Processing Facility, One Town, One Product (OTOP) Programs, Breeding Station, Agro-Industrial Facilities, Establishment of Seed Farm and Seed Banks, Purchase of Fries and Fingerlings, Solar Dryer, and other related facilities and equipment
- **Social Projects** – Level II Water Supply System, Health Centers, Lying-In Clinics and Hospitals, Nursery, Day Care Center, Construction of Orphanage/Home for the Aged Facilities, School Building, Public Library and Information Centers, Communal Irrigation, Farm-to-Market Roads, Rural Roads and Bridges, Policy Reform-Related Initiatives (computerization programs such as of Financial Management Information System, Community-Based Information and Monitoring System, etc.) Training Center, Non-Formal Education Facility, Sports Complex, Gymnasium, Basketball Court, Housing Project, Traffic Management Systems, Multi-Purpose Pavement, and other related facilities and equipment





## Relief and Response

Food (basic food needs such as: rice, canned goods, sugar, etc), Water (for drinking, sanitation, and medical purposes), Clothing, Temporary shelter to house evacuees, Medicine, Emergency tools and equipment such as: power generators, flashlights, SOLAS equipment set, etc)

### 3. Revenue Administration and Modernization Program

Objectives/Main Areas of Assistance: Assist and support in the improvement and strengthening of local government capacities in fiscal management, revenue administration and resource mobilization

#### Target Areas:

##### **Real Property Tax Administration Project (RPTAP)**

– Manual: Tax Mapping (TM); Records Conversion and Management (RCM); Tax Collection Enforcement (TCE)

##### **RPTAP**

– Computerized: Digitization and Data Computerization; Geographic Information System (GIS); Updating of the Schedule of Market Values (SMV); General Revision of Property Assessment and Classification

##### **Business Tax Enhancement Program (BTEP):**

Business Tax Mapping; Records Conversion and Management (RCM); Tax Collection Enforcement (TCE); Data Computerization



## Equipment:

Early Warning System, Emergency and Life Support Vehicles, Emergency Tools and Equipment, Safety of Life at Sea (SOLAS) equipment set, Life support vehicles for rescue and evacuation (i.e., ambulance) and Acquisition of light and heavy equipment for disaster preparedness.

## Infrastructure:

Reforestation, Afforestation, Rehabilitation of declared watersheds, and establishment of “green areas”, Funding hazard resistant construction and engineering works  
Exclusive for Municipalities: Slope stabilization and riverbank projects, Construction of Seawalls, Embankments that eliminate flood risks

## Disaster Rehabilitation

### Soft Component:

Training on small-scale livelihood projects, counseling, capacity building, and other mental health care services due to trauma brought about by disaster/calamity and other activities as deemed relevant by the LGU and MDFO appraisal team; and augmentation for health-related epidemics

### Equipment:

Acquisition of light and heavy equipment for restoration subprojects

Infrastructure: Repair and reconstruction of critical facilities (water supply systems, public market, permanent low-cost shelter, bridges, health centers, and the like), Basic Infrastructure (school buildings, agricultural facilities, and similar projects); Resettlement/Reconstruction of low-cost permanent shelters (housing)





## 6. Public-Private Partnership Fund

Objectives/Main Areas of Assistance: Funding for LGU equity counterpart/share in a PPP scheme

### Target Areas

**Programs/projects under PPP but not limited to the following:**

- Programs/ Projects that were not yet built or developed (new facility)
- Programs/ Projects that were already built but needs augmentation of resources from the private sector thus the need to engage in PPP
- Programs/ Projects that were already in the PPP but needs additional LGU counterpart

## 7. Equity Financing

Objectives/Main Areas of Assistance: Funding for LGU equity counterpart/share in other projects like the Philippine Rural Development Project

### Target Areas:

Equity counterpart of LGU for projects applied under other national government agencies/program/official development assistance (ODA)

## 8. Municipio Fund

Objectives/Main Areas of Assistance: Aims to address the establishment of municipal halls in some LGUs, and the need to relocate or rehabilitate municipal halls due to disasters or natural dilapidation, and provide a conducive workplace for local government employees and clients

### Target Areas:

Construction, relocation, rehabilitation, and expansion of municipal halls/buildings including acquisition of lot

Note: This particular financing facility has a standard design for municipal hall subprojects for new construction



## 4. Project Technical Assistance and Contingency Fund

Objectives/Main Areas of Assistance: Help accelerate the LGU preparation and submission of feasibility studies and detailed engineering design, and other technical assistance requirements of LGUs

### Target Areas:

- Preparation of project feasibility studies
- Preparation of Detailed Engineering Design
- Actual foreign exchange cost differential incurred upon project implementation
- Other technical assistance (TA) needs of the LGU which are deemed necessary for the completion of a project and are not included in the original SPLA such as capacity building, technical related tests, etc.

## 5. Equipment Acquisition Fund

Objectives/Main Areas of Assistance: Concessional financing for heavy, light, agricultural and hospital equipment in support of socio-economic development initiatives of local government units

### Target Areas:

**The following are eligible under the scheme, but not limited to these projects:**

- Heavy Equipment (for Provinces only)
- Trailers for Heavy Equipment
- Rescue Vehicles
- Medical Equipment
- Agricultural Equipment





MULTI-SECTOR

# PUBLIC-PRIVATE PARTNERSHIP CENTER



## Target Areas:

Development needs of LGUs include not only revenue-generating projects, but also social and environmental projects. In addition, the MDFO provides financing for solid waste management facilities, disaster mitigation and rehabilitation infrastructures, revenue administration, and others as identified by the LGU as priority

## Development Partners:

MDFO Funds are allocated in different MDFO Financing Windows which are designed to cater to the particular development needs of Local Government Units



### Municipal Development Fund Office

1300 Pennsylvania Avenue, NW Washington, DC 20523 USA

Tel No.: (02) 8-523-9935 / 8-525-9187

Mobile Nos. 0947-315-9105 / 0977-199-5633



- Identifies/provides solutions to various technical, financial, legal and contractual issues/problems related to project development, approvals and implementation
- Review and finalization of draft contracts and other bidding documents (e.g., RFP, Instructions to Bidders)
- Development of Alternative Project Development Framework

### Target Areas

#### Coverage:

LGUs, SUCs, WDs, special economic zones (SEZ), and Tourism Enterprise Zones (TEZ)

#### Priority Sectors:

Facilitate the development of local PPP projects in diverse priority sectors that supplement the infrastructure development plans of clients, including Water Supply and Sanitation Facilities, Solid Waste Management Facilities, Vertical Infrastructure, Transport Terminals, Health Infrastructures, Tourism Facilities, Climate Change Mitigation and Adaptation, Food Security, Renewable Energy, and Information and Communication Technology Facilities, among others

**Development Partner:** PPP Center

## PROVISION OF TECHNICAL ASSISTANCE FOR PROJECT DEVELOPMENT

### OBJECTIVES/MAIN AREAS OF ASSISTANCE

**The PPP Center extends technical assistance to national and local implementing agencies (IA) (e.g., national government agencies, GOCCs, local government units [LGU], water districts [WD], state universities and colleges [SUC]) in the preparation, packaging, structuring, approval, and bidding of their projects with the private sector participation.**

#### Specifically, these cover the following:

- Conduct preliminary assessment and rapid assessment of the project's viability for PPP implementation
- Provide initial assessment on available project development support that can be offered to IAs/LGUs (e.g. business case to be conducted by in-house officials of PPP Center and IAs/LGUs, funding from the PPP Center's Project Development and Monitoring Facility etc.)
- Conduct of Business Case
- Conduct review of project concepts, business cases, feasibility studies, and unsolicited proposals to be presented and discussed with the concerned IAs/LGUs
- Provide assistance in the actual conduct of bidding for both solicited and unsolicited proposals (e.g., pre-qualification processes, evaluation of bids, contract review, Swiss challenge process, etc.)



# PROJECT DEVELOPMENT AND MONITORING FACILITY (PDMF)

## OBJECTIVES/MAIN AREAS OF ASSISTANCE

### Target Areas

Eligible projects for PDMF support are infrastructure or development projects normally financed by the public sector but which will now be wholly or partly implemented by the private sector, as defined under the Build-Operate-Transfer (BOT) Law and Joint Venture Arrangements

#### Coverage:

LGUs, SUCs, WDs, SEZ, and TEZ

#### Priority Sectors:

Facilitate the development of local PPP projects in diverse priority sectors that supplement the infrastructure development plans of clients, including Water Supply and Sanitation Facilities, Solid Waste Management Facilities, Vertical Infrastructure, Transport Terminals, Health Infrastructures, Tourism Facilities, Climate Change Mitigation and Adaptation, Food Security, Renewable Energy, and Information and Communication Technology Facilities

### Development Partners:

PPP Center/ Asian Development Bank with funds from the Government of Australia (GOA) and various donors

**The PDMF is a funding mechanism available to agencies and LGUs for developing bankable PPP projects and ensuring effective monitoring of project implementation. The PDMF shall be used to engage consultants for any or a combination of the following services:**

- Preparation of solicited projects (i.e. feasibility studies) and assistance in the management of the bidding process for solicited projects
- Assistance in the evaluation, negotiation, and management of the Swiss Challenge process for unsolicited proposals
- Assistance until financial close
- Probity advisory
- Monitoring of project implementations



# PROVISION OF CAPACITY BUILDING WORKSHOPS FOR LGUS

## OBJECTIVES/MAIN AREAS OF ASSISTANCE

### Target Areas:

#### Coverage:

LGUs, SUCs, WDs, SEZ, and TEZ

### Priority Sectors:

Facilitate the development of local PPP projects in diverse priority sectors that supplement the infrastructure development plans of clients, including Water Supply and Sanitation Facilities, Solid Waste Management Facilities, Vertical Infrastructure, Transport Terminals, Health Infrastructures, Tourism Facilities, Climate Change Mitigation and Adaptation, Food Security, Renewable Energy, and Information and Communication Technology Facilities

**Development Partner:** PPP Center

**The PPP Center institutionalized a capacity building program that would promote an environment conducive to the promotion of PPP projects as a viable option for development.**

**It strives to empower implementing agencies and LGUs with the competencies to craft well-structured PPP infrastructure development projects.**

**The activities and interventions that the Capacity Building Division (CBD) can provide are founded on its Capacity Building Framework, which covers the spectrum of project pre-implementation and implementation phases of a typical PPP project.**

**The CBD offers a whole range of interventions, which are matched and customized according to the needs of the requesting party. These could include training, internship, briefing, and the provision of learning materials, among many others.**



# ASSISTANCE IN POLICY FORMULATION FOR LGUS

## OBJECTIVES/MAIN AREAS OF ASSISTANCE

### Target Areas

#### Coverage:

LGUs, SUCs, WDs, SEZ, and TEZ

#### Priority Sectors:

Facilitate the development of local PPP projects in diverse priority sectors that supplement the infrastructure development plans of clients, including Water Supply and Sanitation Facilities, Solid Waste Management Facilities, Vertical Infrastructure, Transport Terminals, Health Infrastructures, Tourism Facilities, Climate Change Mitigation and Adaptation, Food Security, Renewable Energy, and Information and Communication Technology Facilities

**Development Partner:** PPP Center

**Pursuant to Section 2 (c) of Executive Order no. 8, s. 2010, the PPP Center, through its Policy Formulation Division (PFD) , primarily recommends plans, policies, and implement guidelines related to PPP to address policy gaps in PPP process and fast track the implementation of projects in the pipeline.**

**The PFD's major functions involve several activities such as, but not limited to:**

- Developing policy instruments (e.g. draft bills, executive orders, and policy circulars, guidelines, and statements)  
The PPP Center recommends policies to be adopted by the PPP Governing Board. The PPP Center is also currently drafting the sectoral guidelines on water and sanitation, health, and solid waste management to serve as basis for LGUs in preparing their PPP projects
- Convening stakeholder consultations and workshops relevant to drafting said policy instruments
- Providing technical knowledge to various stakeholders

Currently, the PPP Center is actively pursuing the passage of the amendments to Republic Act no. 7718, otherwise known as the Amended BOT Law, to improve the enabling policy environment for the country's PPP Program. The amendments will also ensure its sustainability and responsiveness to the needs of the stakeholders and institutionalizing the best practices in the PPP Program





**MULTI-SECTOR  
NATIONAL ECONOMIC  
AND DEVELOPMENT  
AUTHORITY**



**Public-Private Partnership Center**  
8th Floor, One Cyberpod Centris, EDSA Cor. Quezon Avenue  
Brgy. Pinyahan, Quezon City  
Office No.: (+632) 8709-4146 local 2301  
(+632) 8709-4146 local 6001  
Email: MGSebastian@ppp.gov.ph  
LLAdvincula@ppp.gov.ph



Directory of Assistance for LGUs and Constituents



# TRAINING ON TECHNICAL SECRETARIAT SERVICES

## OBJECTIVES/MAIN AREAS OF ASSISTANCE

Conduct training on technical secretariat services which aims to enhance the capability of the technical secretariat on their role before, during and after meetings.

The training is composed of lectures, exercises and workshops on the following topics:

- Overview of Secretariat's role
- Preparations before the meeting - need for meeting, agenda setting, sources of agenda items, notices of meeting, follow-ups, venue, seat plan and equipment
- Conduct of meeting
- Reception
- Meeting proper
- Facilitation
- Documentation
- Control
- The process - floor director and technical director (process checking)
- After the meeting - Formulation/finalization of Resolutions, Minutes of meeting, matters arising, and follow-up tasks

### Target Areas:

#### Coverage:

LGUs and RLAs

#### Priority Offices:

Secretariat to government organizations/committees/councils

**Development Partner:** NEDA Region IV-A

# TRAINING ON PRESENTATION SKILLS

## OBJECTIVES/MAIN AREAS OF ASSISTANCE

Conduct training on effective presentation skills which aims to build and enhance the capability of the public sector in preparing presentation materials and how to deliver effective presentation during meetings/fora.

The training is composed of lectures, exercises, workshops on the following topics:

- Knowing your stakeholders/audience
- Framing messages
- Public speaking tips
- Creating technical presentations

### Target Areas:

#### Coverage:

LGUs and RLAs

#### Priority Offices:

Government officials and staff involved in communicating to their stakeholders the different efforts of the government

**Development Partner:** NEDA Region IV-A



# TRAINING ON CALABARZON REGIONAL PROJECT MONITORING AND EVALUATION SYSTEM (RPMES)

## OBJECTIVES/MAIN AREAS OF ASSISTANCE

Conduct training on the Regional Project Monitoring and Evaluation System (RPMES). The RPMES was established through Executive Order 376 to complement the government's policies on decentralization and the creation of the Project Monitoring Committees (PMCs). The RPMES is an institutional mechanism for the monitoring and evaluation (M&E) of programs/projects (P/Ps) that provides an avenue for the early detection and resolution of problems at the grassroots level.

The RPMES training aims to provide knowledge on the RPMES Guidelines, basic background on monitoring and evaluation and its importance, orient the participants on their roles and responsibilities as secretariat and members of the Local Project Monitoring Committees (LPMCs).

### Target Areas:

#### Coverage:

LGUs and RLAs

#### Priority Offices:

Planning Development Office of LGUs

**Development Partner:** NEDA Region IV-A

# ADVOCACY ON AMBISYON NATIN 2040, REGIONAL DEVELOPMENT PLAN, REGIONAL DEVELOPMENT RESEARCH AGENDA, AND CALABARZON INFORMATION AND COMMUNICATIONS TECHNOLOGY PLAN

## OBJECTIVES/MAIN AREAS OF ASSISTANCE

Provides resource person on AmbisyonNatin 2040 or the country's long term vision, the Regional Development Plan, and other NEDA development publications/products including the Regional Development Research Agenda and the Calabarzon Information and Communications Technology Plan.

It aims to inform stakeholders for them to take part in the development of the region.

### Target Areas:

#### Coverage:

LGUs and RLAs

#### Priority Offices:

All stakeholders in the public and private sectors involved in the development of Calabarzon

**Development Partner:** NEDA Region IV-A



## TRAINING ON THE FORMULATION OF THE PROVINCIAL / LOCAL DEVELOPMENT INVESTMENT PROGRAMS (PDIP/LDIP)

### OBJECTIVES/MAIN AREAS OF ASSISTANCE

NEDA Region IV-A trains Provincial and Local Government Units on the formulation of their Provincial/Local Development Investment Programs PDIP/LDIP.

The training is composed of lectures to cover the following topics, at the minimum:

- Overview of the PDIP/LDIP
- Steps in the formulation of the PDIP/LDIP

#### Target Areas:

##### Coverage:

LGUs, RLAs and SUCs

##### Priority Offices:

Planning Development Offices

**Development Partner:** NEDA Region IV-A

## PROJECT DEVELOPMENT TRAINING

### OBJECTIVES/MAIN AREAS OF ASSISTANCE

Conduct training on the preparation of project proposals

The training aims to enhance the technical skills of LGUs, RLAs and SUCs in project proposal preparation to meet the requirements of funding entities.

The training is composed of lectures and workshops to cover the following topics, at the minimum:

- Project Development Cycle
- Introduction to Logical Framework (Problem Tree Analysis, Objective Tree Analysis and Alternative Analysis)
- Project Proposal Preparation

#### Target Areas:

##### Coverage:

LGUs, RLAs and SUCs

##### Priority Offices:

Planning Development Office

**Development Partner:** NEDA Region IV-A



## TECHNICAL ASSISTANCE ON LOCAL DEVELOPMENT PLANNING

### OBJECTIVES/MAIN AREAS OF ASSISTANCE

In line with its mandate, NEDA Region IV-A provides technical assistance on the preparation of local development plans such as the Provincial Development and Physical Framework Plans and the Comprehensive Land Use Plan of Highly Urbanized Cities (HUC) to harmonize and promote vertical and horizontal alignment of plans.

NEDA Region IV-A also reviews Comprehensive Development Plans (CDP) of LGUs through the Provincial CDP-Technical Assessment Committees.

#### Target Areas:

##### Coverage:

LGUs

##### Priority Offices:

Five Provinces in the Region (Cavite, Laguna, Batangas, Rizal, and Quezon) and Lucena City as HUC

**Development Partner:** NEDA Region IV-A

## TECHNICAL ASSISTANCE ON MAINSTREAMING GENDER AND DEVELOPMENT, AND MIGRATION AND DEVELOPMENT

### OBJECTIVES/MAIN AREAS OF ASSISTANCE

NEDA Region IV-A provides resource person to promote and strengthen mainstreaming of gender and development, and migration and development in local government units (LGUs), regional line agencies (RLAs), and academic institutions.

#### Target Areas:

##### Coverage:

LGUs, RLAs and academic institutions

##### Priority Offices:

All agencies, LGUs and academic institutions in the region

**Development Partner:** NEDA Region IV-A





MULTI-SECTOR

DEPARTMENT OF TOURISM  
AND DEPARTMENT OF PUBLIC  
WORKS AND HIGHWAY  
(DOT / DPWH)



**NEDA Region IV-A**

Barangay Milagrosa, Calamba City, Laguna  
Office No.:(+63949) 502-0289  
Email: calabarzon.neda@gmail.com

**Development Research Division**  
drd@calabarzon.neda.gov.ph

**Policy Formulation and Planning Division**  
pfpd@calabarzon.neda.gov.ph

**Project Development, Investment Programming  
and Budgeting Division**  
pdipbd@calabarzon.neda.gov.ph

**Project Monitoring and Evaluation Division**  
pmed@calabarzon.neda.gov.ph



DEPARTMENT OF TOURISM  
DEPARTMENT OF PUBLIC WORKS AND HIGHWAY (DOT/DPWH)

## TOURISM ROAD INFRASTRUCTURE PROGRAM (TRIP)

| OBJECTIVES/MAIN AREAS OF ASSISTANCE



### Department of Tourism

G/F Dencris Business Building, National Highway  
Barangay Halang, Calamba City, Laguna 4027  
Tel.No.: (049) 508 – 0741 (0747; 0748)  
Email: dot4a@tourism.gov.ph



### Department of Public Work and Highway

EDSA cor. NIA Road Kamuning, Diliman Quezon City  
Tel.No. (02) 481- 0203 / 02 928-2344 / 481-0279 / 481-0283  
Tel.Fax (02) 927-3276 / 927-1251  
Email: dpwh4a.ord@gmail.com / dpwhr4apio@gmail.com

**Road Network Infrastructure leading to Tourism Attractions and Destinations.**

**For details on guidelines and procedure, refer to Guidelines for Tourism Road Infrastructure Project Prioritization Criteria Under the DOT-DPWH Convergence Program.**

### Target Areas

CALABARZON

### Development Partners

DOT and DPWH





Directory of Assistance for  
**LGUs and Constituents**

CAVITE  
LAGUNA  
BATANGAS  
RIZAL  
QUEZON





## TRAINING ON CALABARZON REGIONAL PROJECT MONITORING AND EVALUATION SYSTEM (RPMES)

OBJECTIVES/MAIN AREAS OF ASSISTANCE

Conduct training on the Regional Project Monitoring and Evaluation System (RPMES). The RPMES was established through Executive Order 376 to complement the government's policies on decentralization and the creation of the Project Monitoring Committees (PMCs). The RPMES is an institutional mechanism for the monitoring and evaluation (M&E) of programs/projects (P/Ps) provides an avenue for the early detection and resolution of problems at the grassroots level.

The RPMES training aims to provide knowledge on the RPMES Guidelines, basic background on monitoring and evaluation and its importance. Orient the participants on their roles and responsibilities as secretariat and members of the Local Project Monitoring Committees

**Target Areas**

**Coverage:**  
LGUs and RLAs.

**Priority Offices:**  
Planning Development Office of LGUs

## PROJECT DEVELOPMENT TRAINING

OBJECTIVES/MAIN AREAS OF ASSISTANCE

Conduct training on the preparation of project proposals. The training aims to enhance the technical skills of LGUs, RLAs and SUCs in project proposal preparation to meet the requirements of funding entities.

The training is composed of lectures and workshops to cover the following topics, at the minimum:

- Project Development Cycle
- Introduction to Logical Framework (Problem Tree Analysis, Objective Tree Analysis and Alternative Analysis)
- Project Proposal Preparation

**Target Areas**

**Coverage:**  
LGUs and RLAs, and Sucs

**Priority Offices:**  
Planning Development Office



A six-year (6) project designed to establish the Government platform for a modern, climate-smart and market-oriented agricultural sector.

To increase rural incomes and improve farm and fishery productivity in targeted areas.

**Objective**  
 In partnership with LGUs and the private sector, the Project shall provide key infrastructure, training, technology and information to raise incomes, productivity and competitiveness in targeted areas.

- Component 1: Local and National Level Planning (NPLA)
- Component 2: Infrastructure Development (I.D./I.D.)
- Component 3: Enterprise Development (I.P/ED)
- Component 4: Implementation Support (I-S/IS/INT)

**Requirements**

- 1 Letter of Intent (LOI) to the Project through the concerned DA RFO;
- 2 Participating Provincial PLGU to identify appropriate intervention based on value chain analysis;
- 3 Memorandum of Agreement (MOA) between RFOs and

**Target Areas**

Areas where productivity is low and the incidence of poverty is high.

**Contact Details**

**PICT National Project Coordination Office**  
 c/o Dep. Sec., Department of Agriculture, National  
 Agriculture and Veterinary Center Building,  
 National Office, Manila, District Office

**Address:** c/o Dep. Sec., Department of Agriculture, National  
 Agriculture and Veterinary Center Building,  
 National Office, Manila, District Office

**Contact No. / Email Address:** (02) 8768 8762 to 40 /  
 info@picthelpdesk.org

**Management Office:** c/o Office of Agriculture World Bank (OWB)

© 2011 Department of Agriculture, National Office



Economic Sector  
**DEPARTMENT OF  
 INFORMATION AND  
 COMMUNICATIONS  
 TECHNOLOGY**



Directory of Assistance for LGUs and Cooperatives